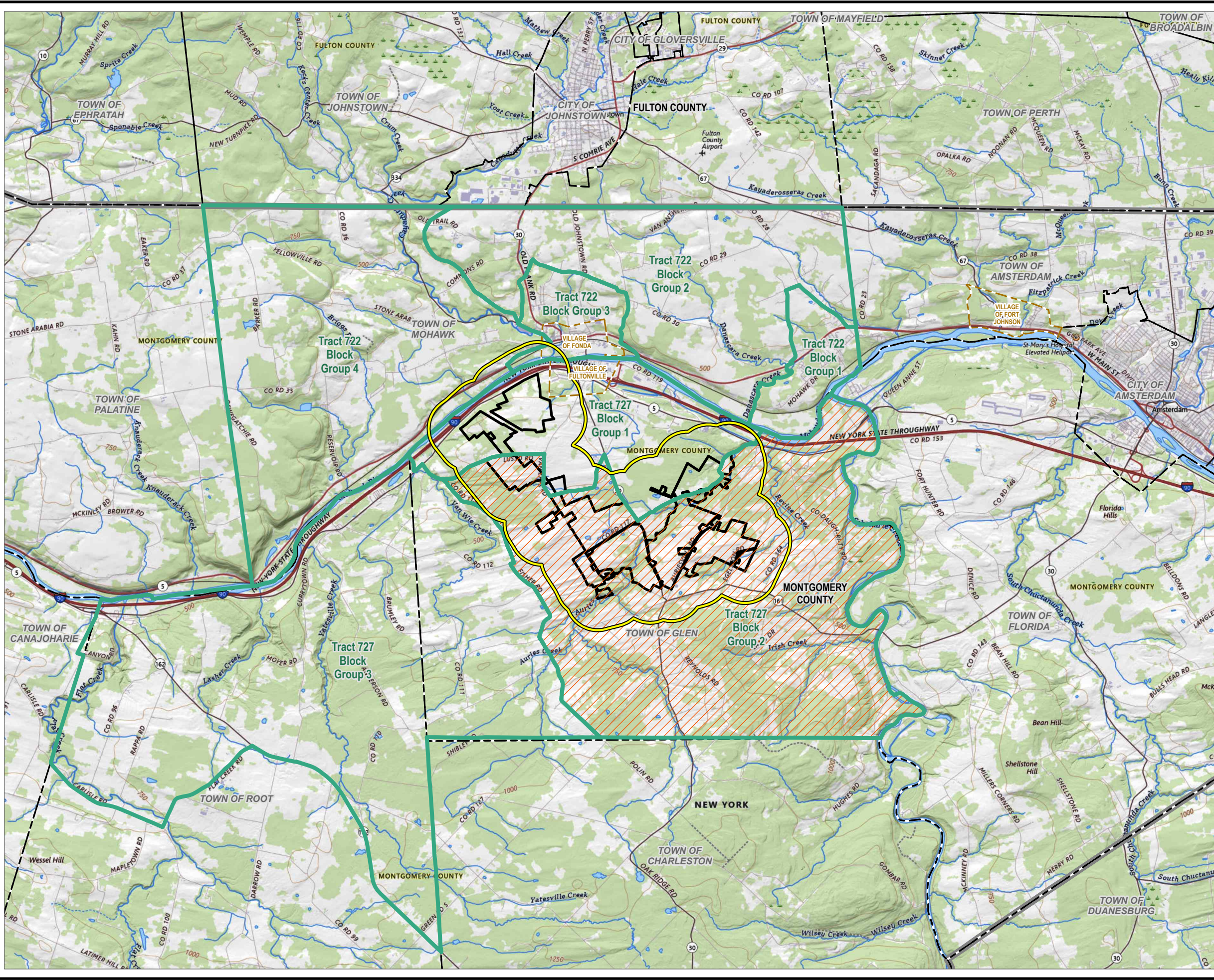


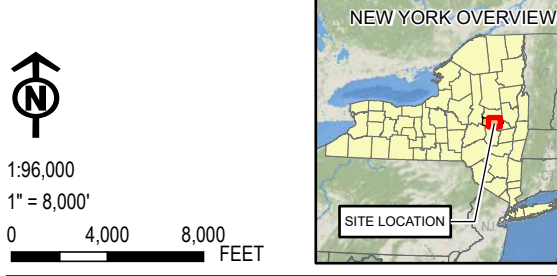
Coordinate System: NAD 1983 StatePlane New York East FIPS 3101 Feet, Map Rotation: 0
 - Saved By: AKALIAS on 5/21/2024, 14:39:47 PM, File Path: \\emplyesgis\proj\PROJECTS\ConnectGen\11804-Mill_Point_Solar1-APRX\Mill_Point_94C_Ex19.aprx, Layout Name: MP_Fig19_3_PEJA_11X17L



- HALF MILE BUFFER
- US CENSUS BLOCK GROUPS
- POTENTIAL ENVIRONMENTAL JUSTICE AREA
- VILLAGE BOUNDARY
- TOWN BOUNDARY
- FACILITY SITE
- COUNTY BOUNDARY

NOTES:
 1. THIS FIGURE IS DESIGNED TO BE VIEWED OR PRINTED IN COLOR AT 11X17.

BASE MAP: USGS, THE NATIONAL MAP TOPO, APRIL 2023.
 DATA SOURCES: ESRI, USGS, NYSGIS, CENSUS BUREAU, NEW YORK STATE DATA CLEARINGHOUSE (PEJA 2020).



PROJECT: CONNECTGEN MONTGOMERY COUNTY LLC MILL POINT SOLAR I TOWN OF GLEN, MONTGOMERY COUNTY, NY		
TITLE: POTENTIAL ENVIRONMENTAL JUSTICE AREA 2020 NYS MAPPING IN THE 0.5-MILE BUFFER		
DRAWN BY:	A. KAILAS	PROJ. NO.:
CHECKED BY:	D. REILLY	411360
APPROVED BY:	T. KONDAK	FIGURE 19-3
DATE:	MAY 2024	