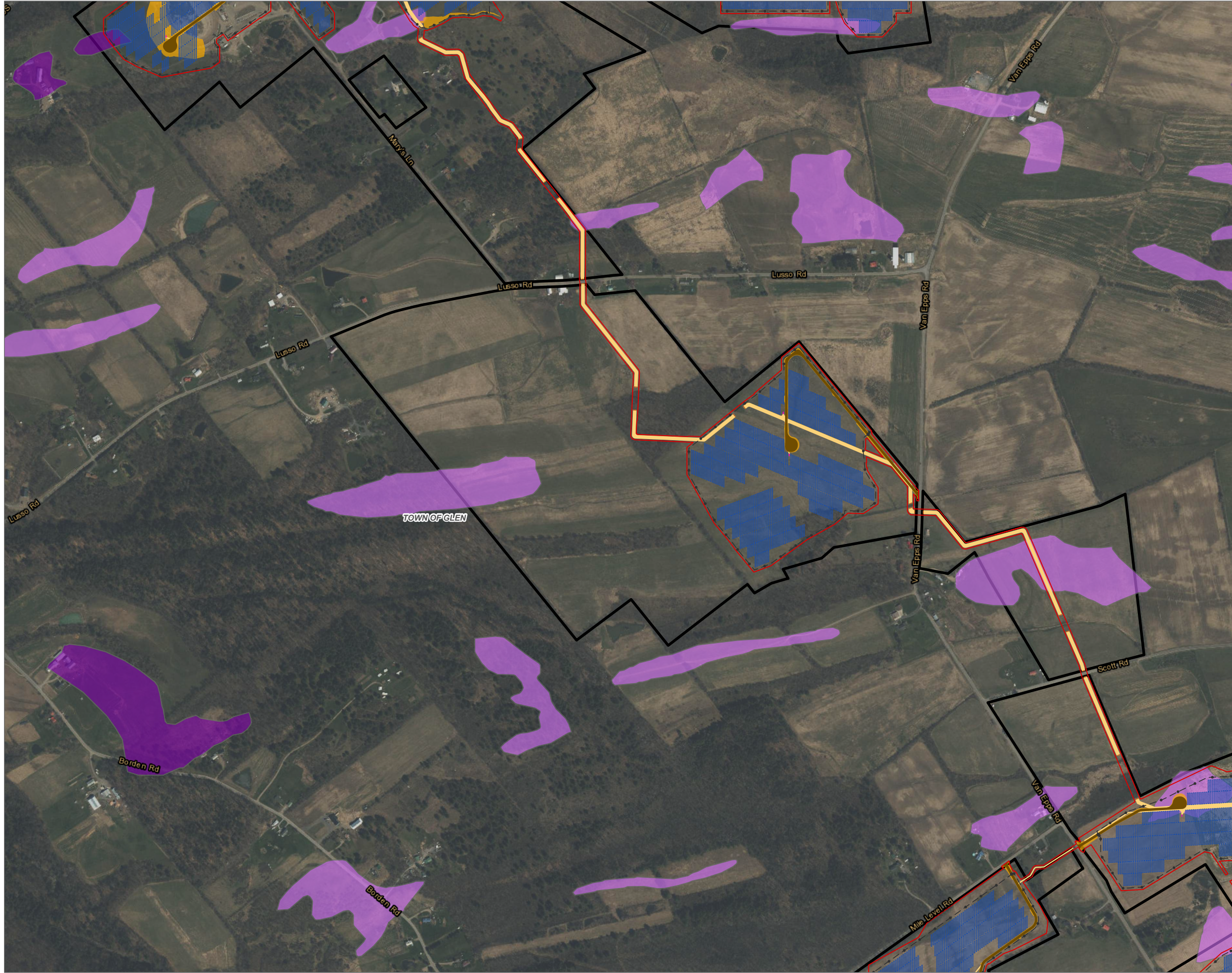


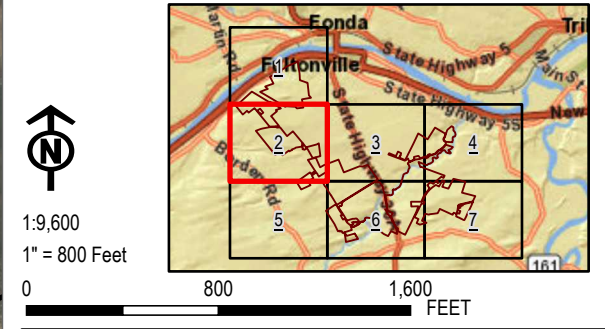
Coordinate System: NAD 1983 StatePlane New York East FIPS 3101 Feet; Map Rotation: 0
 -- Saved By: AKAILAS on 8/5/2024, 11:15:22 AM; File Path: \\emplyee\gis\arcgispro\1-PROJECTS\CONNECTGEN\411360-Mill_Point_Solar\2-APRX\Mill_Point_94C_Ex_15.aprx; Layout Name: MP_Fig15_3_MineralSoilGroup.aprx; 4_11X17L



- FACILITY COMPONENTS**
- ACCESS ROADS
 - ARRAY PANELS
 - SUBSTATION
 - COLLECTION TRENCH
 - HDD BORE PITS
 - GRADING LIMITS
 - INVERTERS
 - LAYDOWN AREA
 - POI SWITCHYARD
 - POLES
 - FENCE LINE
 - LIMITS OF DISTURBANCE
 - FACILITY SITE
- MINERAL SOIL GROUP**
- MINERAL SOIL GROUP 1
 - MINERAL SOIL GROUP 2
 - MINERAL SOIL GROUP 3
 - MINERAL SOIL GROUP 4
- VILLAGE BOUNDARY
 - TOWN BOUNDARY

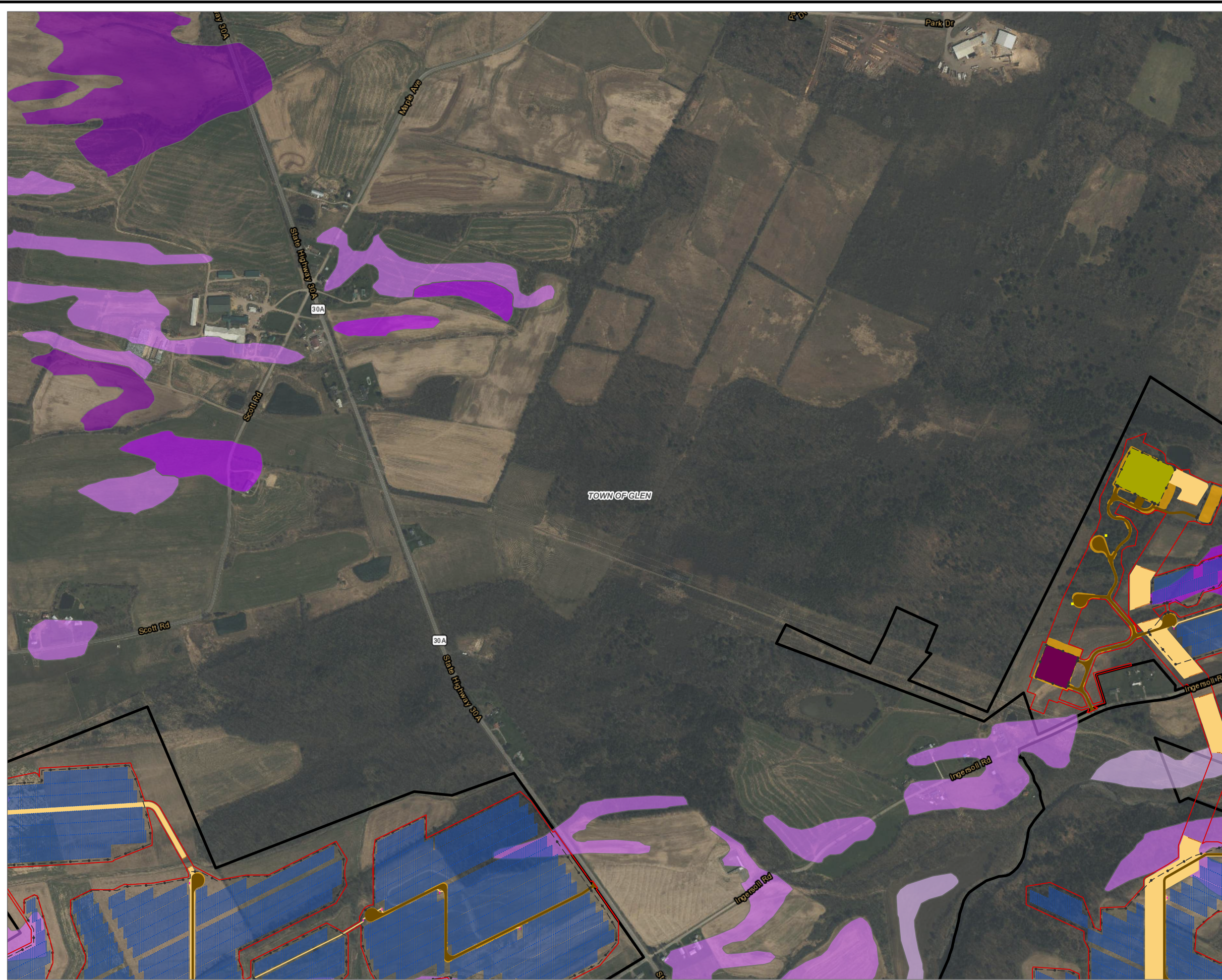
NOTES:
 1. THIS FIGURE IS DESIGNED TO BE VIEWED OR PRINTED IN COLOR AT 11X17.

BASE MAP: ESRI WORLD IMAGERY SERVICE (3/30/2022)
 DATA SOURCES: ESRI, USGS, NYS GIS, NRCS, USDA, NYSDERDA, TRC.



PROJECT:		CONNECTGEN MONTGOMERY COUNTY LLC MILL POINT SOLAR I TOWN OF GLEN, MONTGOMERY COUNTY, NY	
TITLE:		MINERAL SOIL GROUPS 1-4 IN THE FACILITY SITE	
DRAWN BY:	A. KAILAS	PROJ. NO.:	411360
CHECKED BY:	C. PEARCE	REVISED FIGURE 15-3 MAP 2 OF 7	
APPROVED BY:	T. KONDAK		
DATE:	AUGUST 2024		
		3 CORPORATE DRIVE SUITE 202 CLIFTON PARK, NY 12065 PHONE: 518.348.1190	
FILE:	MILL_POINT_94C_EX_15APRX		

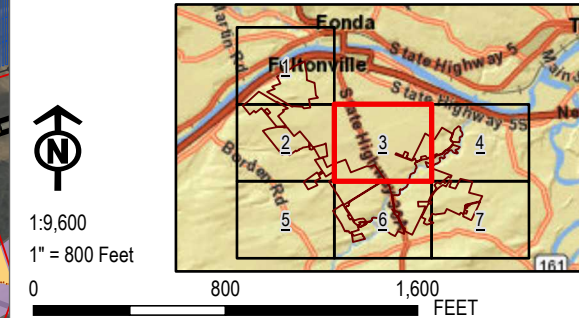
Coordinate System: NAD 1983 StatePlane New York East FIPS 3101 Feet; Map Rotation: 0
 -- Saved By: AKAILAS on 8/5/2024, 11:15:22 AM; File Path: \\emplyee\gis\arcgis\proj\PROJECTS\ConnectGen\411360-Mill_Point_Solar\2-APR\Mill_Point_94C_EX_15.aprx; Layout Name: MP_Fig15_3_MineralSoilGroupst_4_11x17L



- FACILITY COMPONENTS**
- ACCESS ROADS
 - ARRAY PANELS
 - SUBSTATION
 - COLLECTION TRENCH
 - HDD BORE PITS
 - GRADING LIMITS
 - INVERTERS
 - LAYDOWN AREA
 - POI SWITCHYARD
 - POLES
 - FENCE LINE
 - LIMITS OF DISTURBANCE
 - FACILITY SITE
- MINERAL SOIL GROUP**
- MINERAL SOIL GROUP 1
 - MINERAL SOIL GROUP 2
 - MINERAL SOIL GROUP 3
 - MINERAL SOIL GROUP 4
- VILLAGE BOUNDARY
 - TOWN BOUNDARY

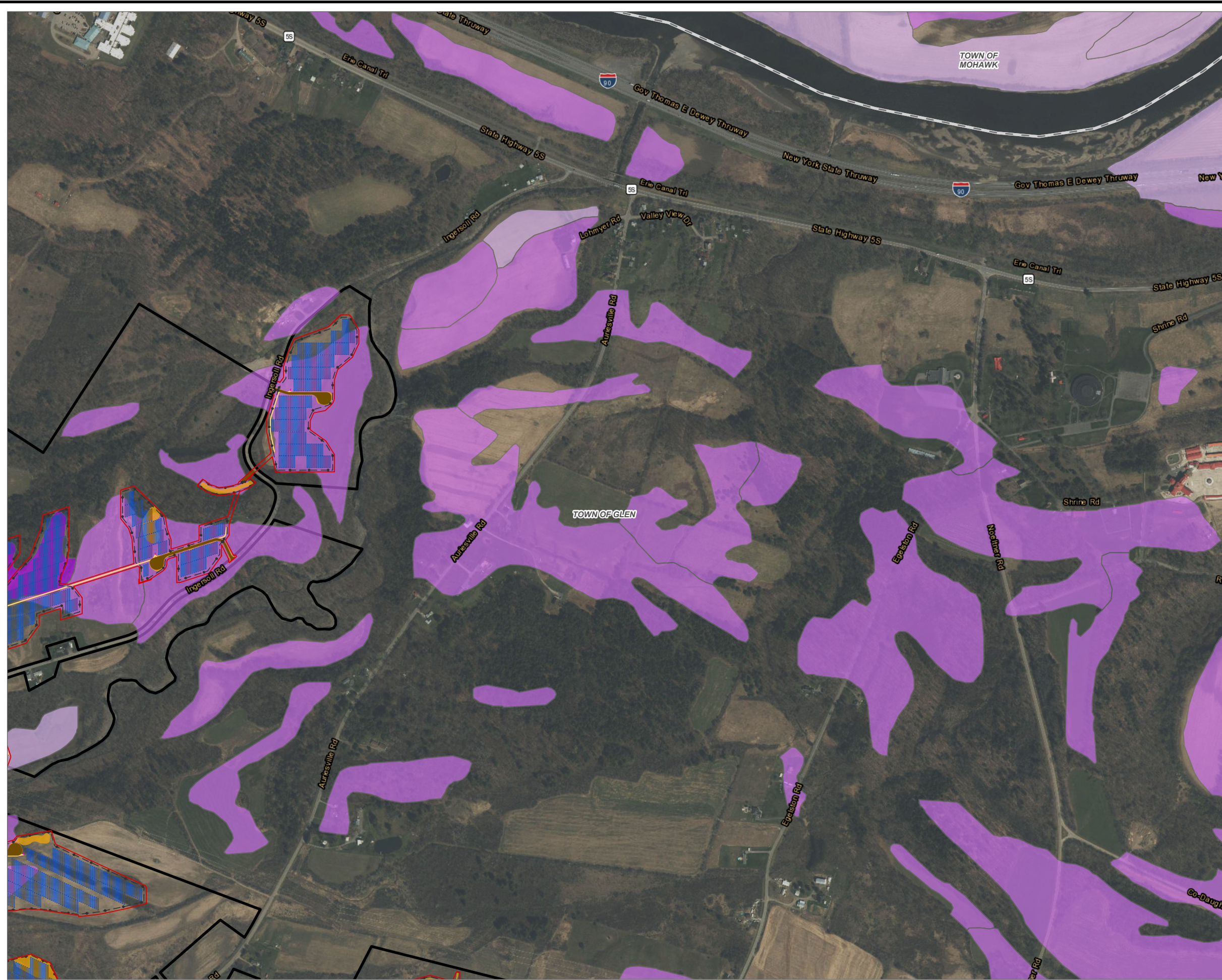
NOTES:
 1. THIS FIGURE IS DESIGNED TO BE VIEWED OR PRINTED IN COLOR AT 11X17.

BASE MAP: ESRI WORLD IMAGERY SERVICE (3/30/2022)
 DATA SOURCES: ESRI, USGS, NYS GIS, NRCS, USDA, NYSEDA, TRC.



PROJECT: CONNECTGEN MONTGOMERY COUNTY LLC MILL POINT SOLAR I TOWN OF GLEN, MONTGOMERY COUNTY, NY	
TITLE: MINERAL SOIL GROUPS 1-4 IN THE FACILITY SITE	
DRAWN BY: A. KAILAS	PROJ. NO.: 411360
CHECKED BY: C. PEARCE	REVISED FIGURE 15-3 MAP 3 OF 7
APPROVED BY: T. KONDAK	
DATE: AUGUST 2024	
3 CORPORATE DRIVE SUITE 202 CLIFTON PARK, NY 12065 PHONE: 518.348.1190	
FILE:	MILL_POINT_94C_EX_15APRX

Coordinate System: NAD 1983 StatePlane New York East FIPS 3101 Feet; Map Rotation: 0
 -- Saved By: AKAILAS on 8/5/2024 11:15:22 AM; File Path: \\emplyee\gis\arcgispro\1-PROJECTS\ConnectGen\411360-Mill_Point_Solar\2-APR\15-Mill_Point_94C_EX_15.aprx; Layout Name: MP_Fig15_3_MineralSoilGroup\4_11x17L

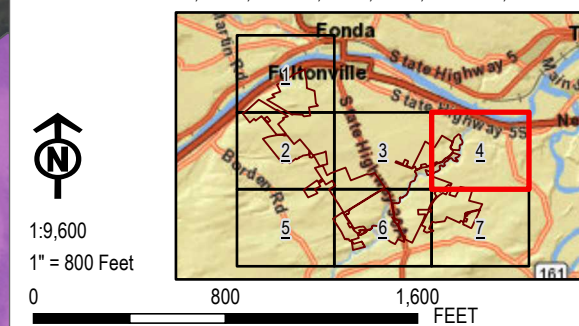


FACILITY COMPONENTS

- ACCESS ROADS
 - ARRAY PANELS
 - SUBSTATION
 - COLLECTION TRENCH
 - HDD BORE PITS
 - GRADING LIMITS
 - INVERTERS
 - LAYDOWN AREA
 - POI SWITCHYARD
 - POLES
 - FENCE LINE
 - LIMITS OF DISTURBANCE
 - FACILITY SITE
- MINERAL SOIL GROUP**
- MINERAL SOIL GROUP 1
 - MINERAL SOIL GROUP 2
 - MINERAL SOIL GROUP 3
 - MINERAL SOIL GROUP 4
- VILLAGE BOUNDARY
 - TOWN BOUNDARY

NOTES:
 1. THIS FIGURE IS DESIGNED TO BE VIEWED OR PRINTED IN COLOR AT 11X17.

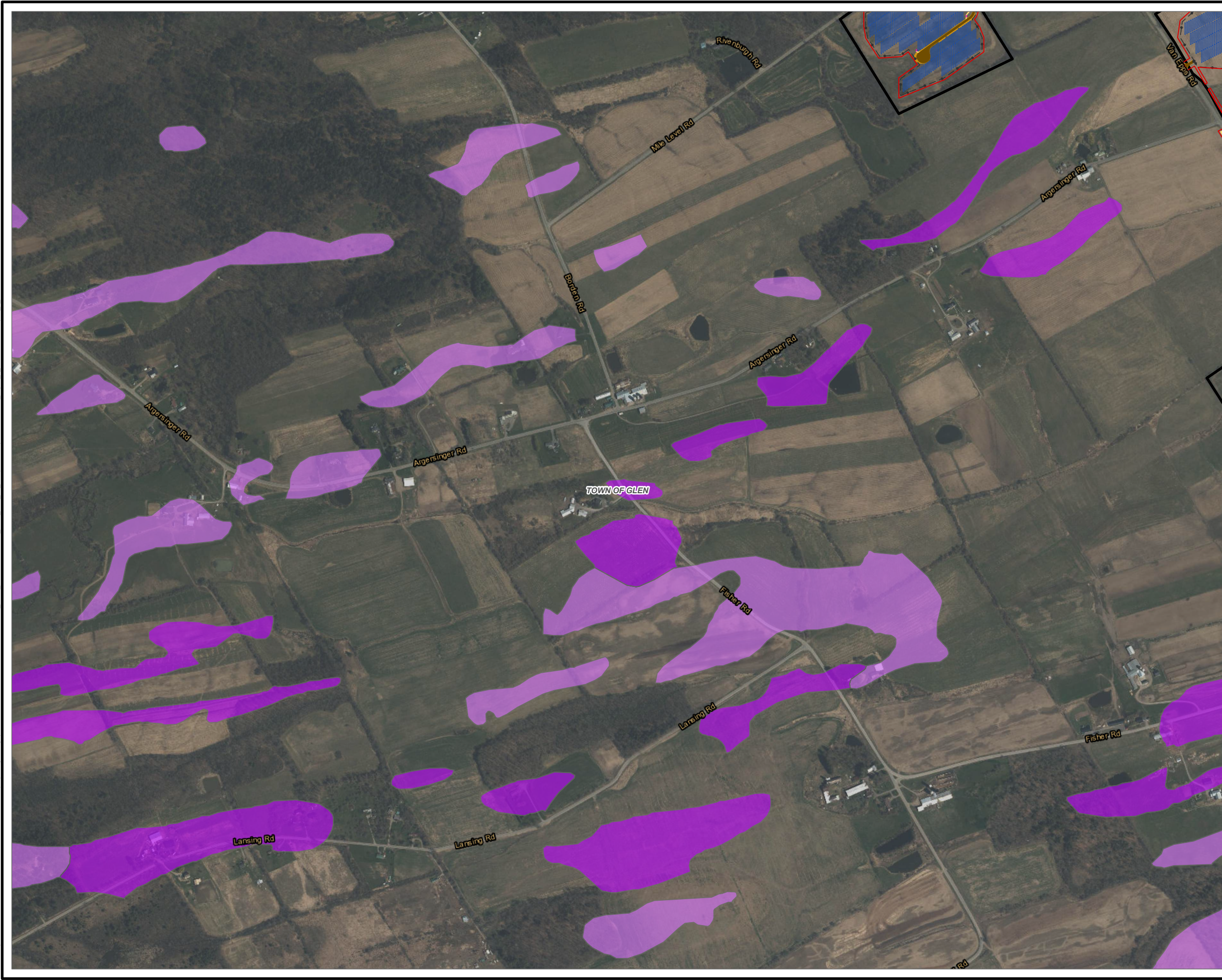
BASE MAP: ESRI WORLD IMAGERY SERVICE (3/30/2022)
 DATA SOURCES: ESRI, USGS, NYS GIS, NRCS, USDA, NYSDERDA, TRC.



1:9,600
 1" = 800 Feet
 0 800 1,600 FEET

PROJECT: CONNECTGEN MONTGOMERY COUNTY LLC MILL POINT SOLAR I TOWN OF GLEN, MONTGOMERY COUNTY, NY	
TITLE: MINERAL SOIL GROUPS 1-4 IN THE FACILITY SITE	
DRAWN BY: A. KAILAS	PROJ. NO.: 411360
CHECKED BY: C. PEARCE	REVISED FIGURE 15-3 MAP 4 OF 7
APPROVED BY: T. KONDAK	
DATE: AUGUST 2024	
3 CORPORATE DRIVE SUITE 202 CLIFTON PARK, NY 12065 PHONE: 518.348.1190	
FILE:	MILL_POINT_94C_EX_15APRX

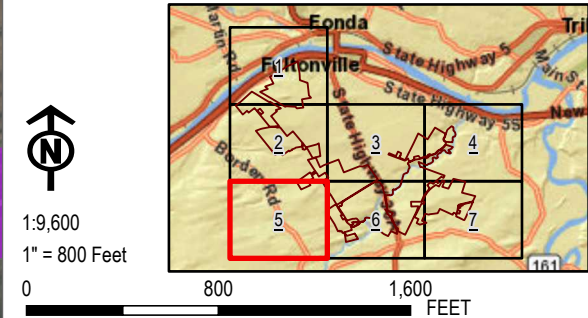
Coordinate System: NAD 1983 StatePlane New York East FIPS 3101 Feet; Map Rotation: 0
 -- Saved By: AKAILAS on 8/5/2024, 11:15:22 AM; File Path: \\emplyees\gis\arcgis\proj\1-PROJECTS\ConnectGen\411360-Mill_Point_Solar\2-APRX\Mill_Point_94C_EX_15.aprx; Layout Name: MP_Fig15_3_MineralSoilGroupst_4_11X17L



- FACILITY COMPONENTS**
- ACCESS ROADS
 - ARRAY PANELS
 - SUBSTATION
 - COLLECTION TRENCH
 - HDD BORE PITS
 - GRADING LIMITS
 - INVERTERS
 - LAYDOWN AREA
 - POI SWITCHYARD
 - POLES
 - FENCE LINE
 - LIMITS OF DISTURBANCE
 - FACILITY SITE
- MINERAL SOIL GROUP**
- MINERAL SOIL GROUP 1
 - MINERAL SOIL GROUP 2
 - MINERAL SOIL GROUP 3
 - MINERAL SOIL GROUP 4
- VILLAGE BOUNDARY
 - TOWN BOUNDARY

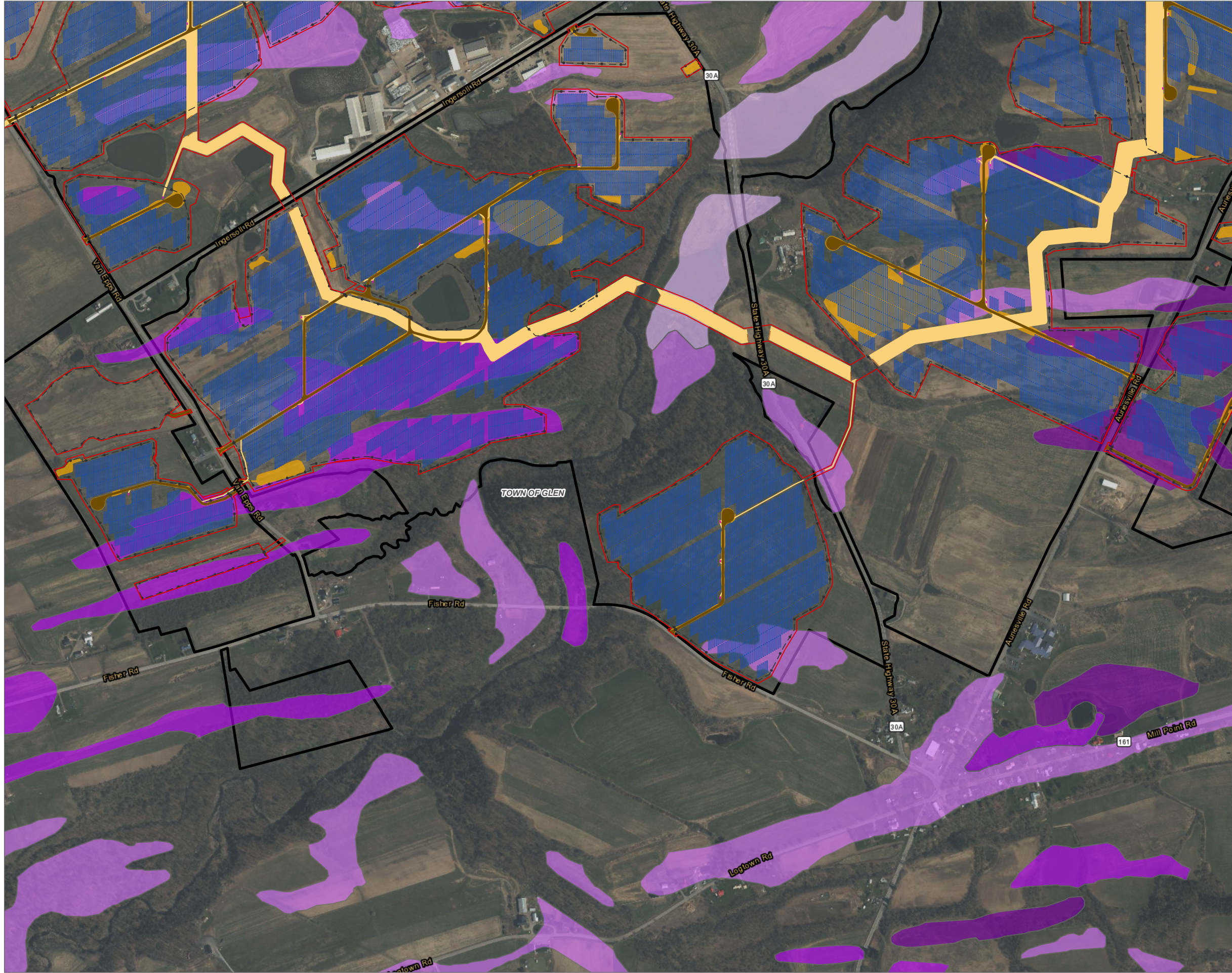
NOTES:
 1. THIS FIGURE IS DESIGNED TO BE VIEWED OR PRINTED IN COLOR AT 11X17.

BASE MAP: ESRI WORLD IMAGERY SERVICE (3/30/2022)
 DATA SOURCES: ESRI, USGS, NYS GIS, NRCS, USDA, NYSDERDA, TRC.



PROJECT:		CONNECTGEN MONTGOMERY COUNTY LLC MILL POINT SOLAR I TOWN OF GLEN, MONTGOMERY COUNTY, NY	
TITLE:		MINERAL SOIL GROUPS 1-4 IN THE FACILITY SITE	
DRAWN BY:	A. KAILAS	PROJ. NO.:	411360
CHECKED BY:	C. PEARCE	REVISED FIGURE 15-3 MAP 5 OF 7	
APPROVED BY:	T. KONDAK		
DATE:	AUGUST 2024		
		3 CORPORATE DRIVE SUITE 202 CLIFTON PARK, NY 12065 PHONE: 518.348.1190	
FILE:	MILL_POINT_94C_EX_15APRX		

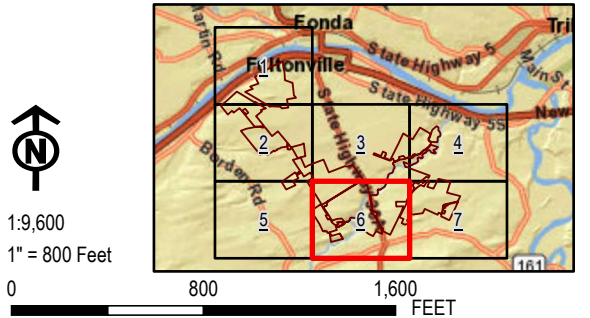
Coordinate System: NAD 1983 StatePlane New York East FIPS 3101 Feet; Map Rotation: 0
 Saved By: AKAILAS on 8/5/2024 11:15:22 AM; File Path: \\emplyee\gis\arcgispro\1-PROJECTS\CONNECTGEN\411360-Mill_Point_Solar\2-APRX\Mill_Point_94C_Ex_15.aprx; Layout Name: MP_Fig15_3_MineralSoilGroupst_4_11x17L



- FACILITY COMPONENTS**
- ACCESS ROADS
 - ARRAY PANELS
 - SUBSTATION
 - COLLECTION TRENCH
 - HDD BORE PITS
 - GRADING LIMITS
 - INVERTERS
 - LAYDOWN AREA
 - POI SWITCHYARD
 - POLES
 - FENCE LINE
 - LIMITS OF DISTURBANCE
 - FACILITY SITE
- MINERAL SOIL GROUP**
- MINERAL SOIL GROUP 1
 - MINERAL SOIL GROUP 2
 - MINERAL SOIL GROUP 3
 - MINERAL SOIL GROUP 4
- VILLAGE BOUNDARY
- TOWN BOUNDARY

NOTES:
 1. THIS FIGURE IS DESIGNED TO BE VIEWED OR PRINTED IN COLOR AT 11X17.

BASE MAP: ESRI WORLD IMAGERY SERVICE (3/30/2022)
 DATA SOURCES: ESRI, USGS, NYS GIS, NRCS, USDA, NYSDERDA, TRC.



PROJECT:		CONNECTGEN MONTGOMERY COUNTY LLC MILL POINT SOLAR I TOWN OF GLEN, MONTGOMERY COUNTY, NY	
TITLE:		MINERAL SOIL GROUPS 1-4 IN THE FACILITY SITE	
DRAWN BY:	A. KAILAS	PROJ. NO.:	411360
CHECKED BY:	C. PEARCE	REVISED FIGURE 15-3 MAP 6 OF 7	
APPROVED BY:	T. KONDAK		
DATE:	AUGUST 2024		
		3 CORPORATE DRIVE SUITE 202 CLIFTON PARK, NY 12065 PHONE: 518.348.1190	
FILE:	MILL_POINT_94C_EX_15APRX		

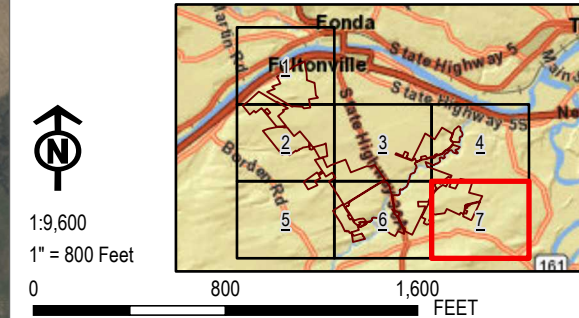
Coordinate System: NAD 1983 StatePlane New York East FIPS 3101 Feet; Map Rotation: 0
 -- Saved By: AKAILAS on 8/5/2024, 11:15:22 AM; File Path: \\emplyee\gis\arcgispro\1-PROJECTS\CONNECTGEN\411360-Mill_Point_Solar\2-APRX\Mill_Point_94C_EX_15.aprx; Layout Name: MP_Fig 15_3_MineralSoilGroupst_4_11X17L



- FACILITY COMPONENTS**
- ACCESS ROADS
 - ARRAY PANELS
 - SUBSTATION
 - COLLECTION TRENCH
 - HDD BORE PITS
 - GRADING LIMITS
 - INVERTERS
 - LAYDOWN AREA
 - POI SWITCHYARD
 - POLES
 - FENCE LINE
 - LIMITS OF DISTURBANCE
 - FACILITY SITE
- MINERAL SOIL GROUP**
- MINERAL SOIL GROUP 1
 - MINERAL SOIL GROUP 2
 - MINERAL SOIL GROUP 3
 - MINERAL SOIL GROUP 4
- VILLAGE BOUNDARY
 - TOWN BOUNDARY

NOTES:
 1. THIS FIGURE IS DESIGNED TO BE VIEWED OR PRINTED IN COLOR AT 11X17.

BASE MAP: ESRI WORLD IMAGERY SERVICE (3/30/2022)
 DATA SOURCES: ESRI, USGS, NYS GIS, NRCS, USDA, NYSEEDA, TRC.



PROJECT:		CONNECTGEN MONTGOMERY COUNTY LLC MILL POINT SOLAR I TOWN OF GLEN, MONTGOMERY COUNTY, NY	
TITLE:		MINERAL SOIL GROUPS 1-4 IN THE FACILITY SITE	
DRAWN BY:	A. KAILAS	PROJ. NO.:	411360
CHECKED BY:	C. PEARCE	REVISED FIGURE 15-3 MAP 7 OF 7	
APPROVED BY:	T. KONDAK		
DATE:	AUGUST 2024		
		3 CORPORATE DRIVE SUITE 202 CLIFTON PARK, NY 12065 PHONE: 518.348.1190	
FILE:	MILL_POINT_94C_EX_15APRX		