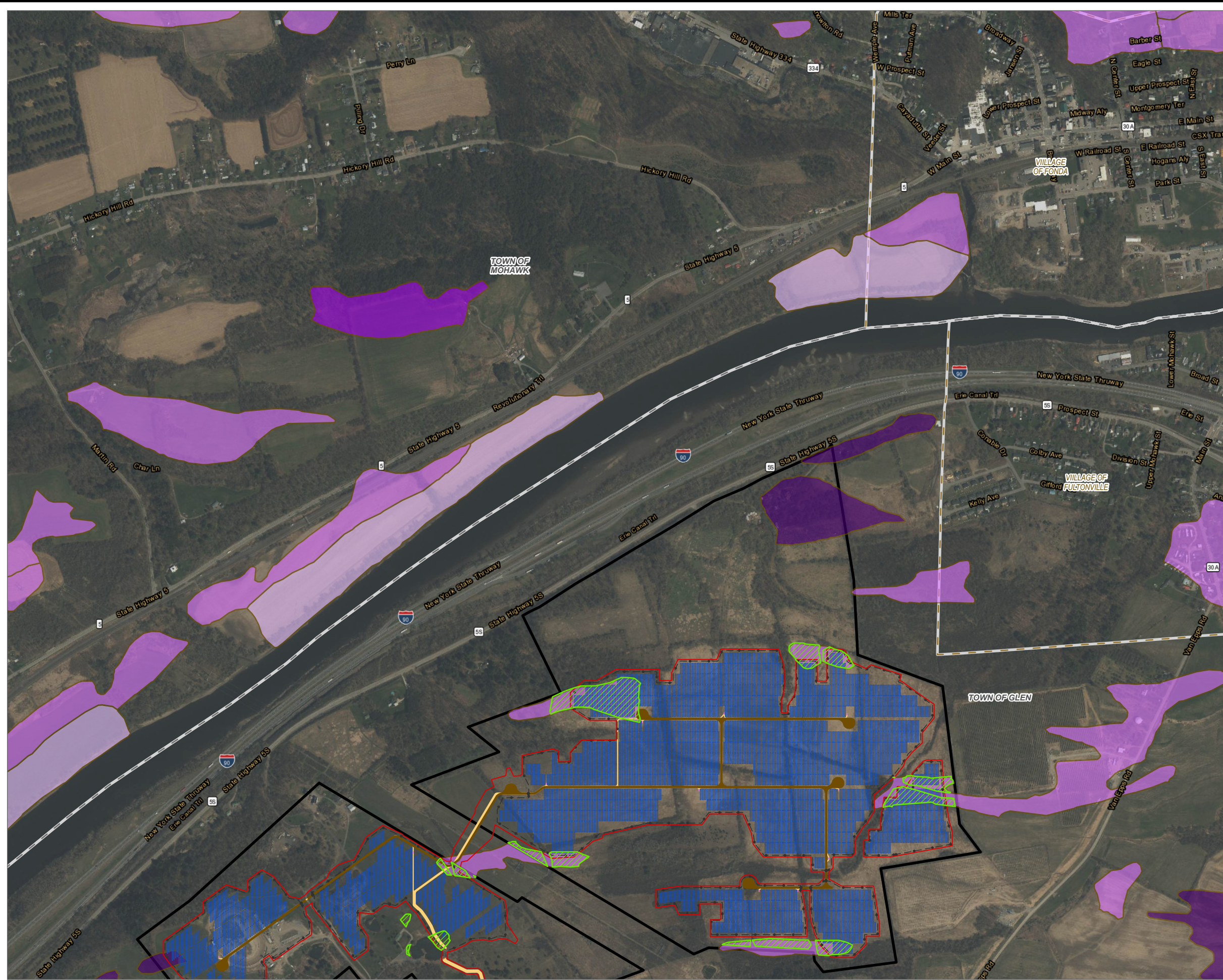


Coordinate System: NAD 1983 StatePlane New York East FIPS 3101 Feet; Map Rotation: 0
 - Saved By: AKAILAS on 7/26/2024, 08:38:24 AM; File Path: \\maplovesgis\isarc\proj1-PROJECTS\Comment\GEM411580-Mill_Point_Solar2-APR\Mill_Point_94C_EX_15.aprx; Layout Name: MP_Fig15-5_Active_Ag_Within_Msg_11x17L



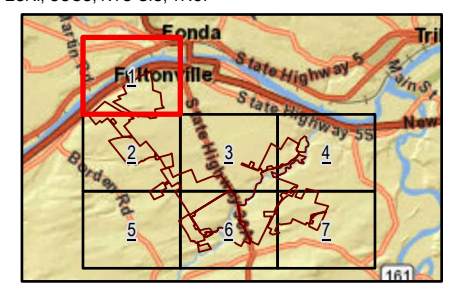
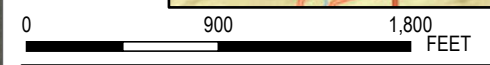
- ACTIVE AG FIELDS WITHIN MSG SOILS 1-4
- MINERAL SOIL GROUP 1
- MINERAL SOIL GROUP 2
- MINERAL SOIL GROUP 3
- MINERAL SOIL GROUP 4
- TOWN BOUNDARY
- VILLAGE BOUNDARY
- FACILITY COMPONENTS**
- ACCESS ROADS
- ARRAY PANELS
- SUBSTATION
- COLLECTION TRENCH
- HDD BORE PITS
- GRADING LIMITS
- INVERTERS
- LAYDOWN AREA
- POI SWITCHYARD
- POLES
- LIMITS OF DISTURBANCE
- FENCE LINE
- FACILITY SITE

NOTES:
 1. THIS FIGURE IS DESIGNED TO BE VIEWED OR PRINTED IN COLOR AT 11X17.

BASE MAP: ESRI WORLD IMAGERY SERVICE (3/30/2022)
 DATA SOURCES: ESRI, USGS, NYS GIS, TRC.



1:10,800
 1" = 900 Feet

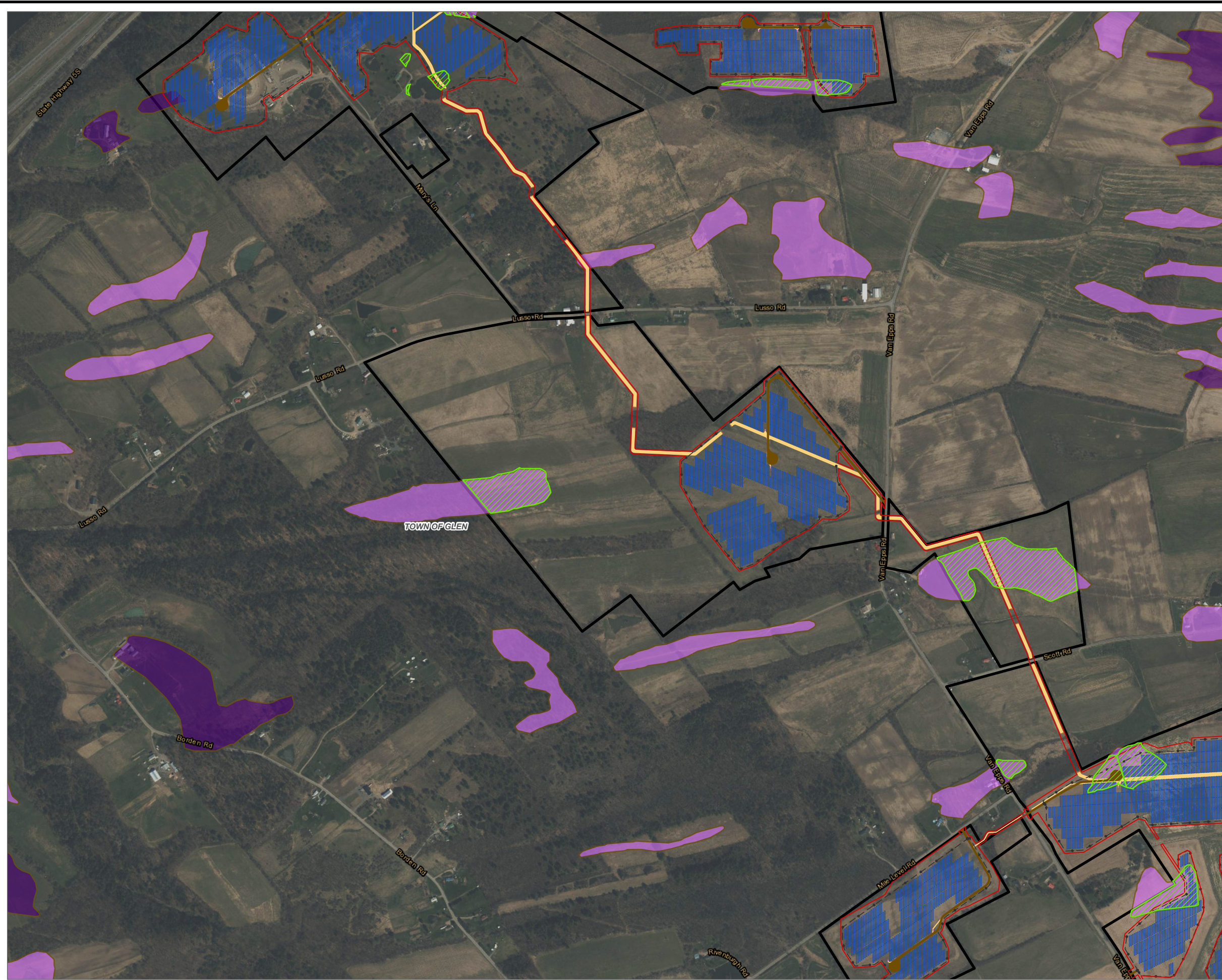


| | | | |
|--|-----------|---|--------|
| PROJECT: | | CONNECTGEN MONTGOMERY COUNTY LLC MILL POINT SOLAR I TOWN OF GLEN, MONTGOMERY COUNTY, NY | |
| TITLE: ACTIVE AGRICULTURAL LANDS WITHIN MSG 1-4 WITHIN THE FACILITY SITE | | | |
| DRAWN BY: | A. KAILAS | PROJ. NO.: | 411360 |
| CHECKED BY: | T. LATHAM | FIGURE 15-5 MAP 1 OF 7 | |
| APPROVED BY: | T. KONDAK | | |
| DATE: | JULY 2024 | | |

3 CORPORATE DRIVE
SUITE 202
CLIFTON PARK, NY 12065
PHONE: 518.348.1190

FILE: MILL_POINT_94C_EX_15APRX

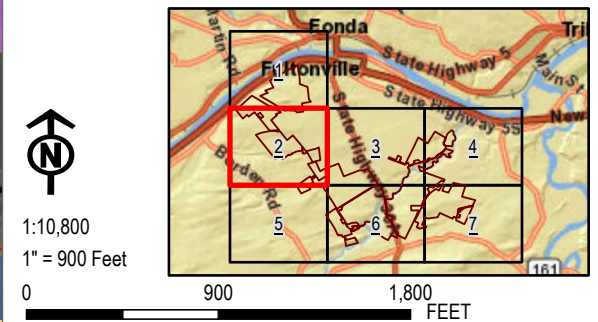
Coordinate System: NAD 1983 StatePlane New York East FIPS 3101 Feet; Map Rotation: 0
 -- Saved By: AKAILAS on 7/26/2024, 08:38:24 AM; File Path: \\mpleyos\gis\arcgispro1\PROJECTS\ConnectGen\411360-Mill_Point_Solar2\APRX\Mill_Point_94C_Ex_15.aprx; Layout Name: MP_Fig15-5_Active_Ag_Within_Msg_11x17L



- ACTIVE AG FIELDS WITHIN MSG SOILS 1-4
- MINERAL SOIL GROUP 1
- MINERAL SOIL GROUP 2
- MINERAL SOIL GROUP 3
- MINERAL SOIL GROUP 4
- TOWN BOUNDARY
- VILLAGE BOUNDARY
- FACILITY COMPONENTS**
- ACCESS ROADS
- ARRAY PANELS
- SUBSTATION
- COLLECTION TRENCH
- HDD BORE PITS
- GRADING LIMITS
- INVERTERS
- LAYDOWN AREA
- POI SWITCHYARD
- POLES
- LIMITS OF DISTURBANCE
- FENCE LINE
- FACILITY SITE

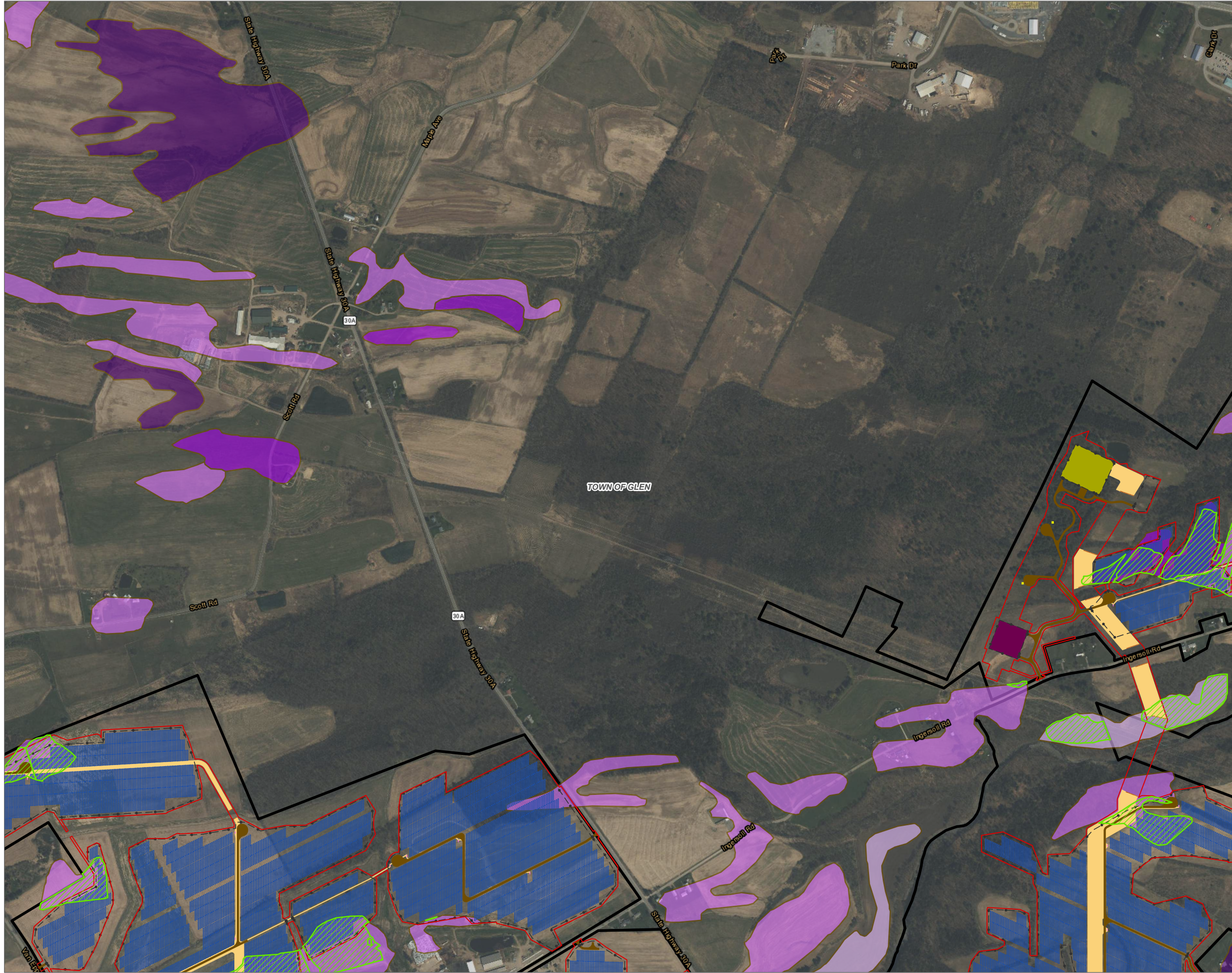
NOTES:
 1. THIS FIGURE IS DESIGNED TO BE VIEWED OR PRINTED IN COLOR AT 11X17.

BASE MAP: ESRI WORLD IMAGERY SERVICE (3/30/2022)
 DATA SOURCES: ESRI, USGS, NYS GIS, TRC.



| | | | |
|--|---------------------------|---|--------|
| PROJECT: | | CONNECTGEN MONTGOMERY COUNTY LLC MILL POINT SOLAR I TOWN OF GLEN, MONTGOMERY COUNTY, NY | |
| TITLE: ACTIVE AGRICULTURAL LANDS WITHIN MSG 1-4 WITHIN THE FACILITY SITE | | | |
| DRAWN BY: | A. KAILAS | PROJ. NO.: | 411360 |
| CHECKED BY: | T. LATHAM | FIGURE 15-5 MAP 2 OF 7 | |
| APPROVED BY: | T. KONDAK | | |
| DATE: | JULY 2024 | | |
| | | 3 CORPORATE DRIVE SUITE 202 CLIFTON PARK, NY 12065 PHONE: 518.348.1190 | |
| FILE: | MILL_POINT_94C_EX_15.APRX | | |

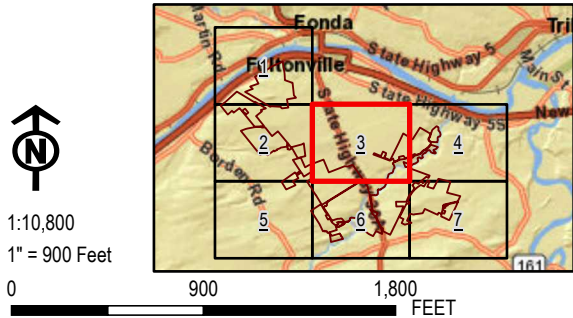
Coordinate System: NAD 1983 StatePlane New York East FIPS 3101 Feet; Map Rotation: 0
 Saved By: AKAILAS on 7/26/2024, 08:38:24 AM; File Path: \\mnp01\gis\isengr\proj1-PROJECTS\ConnectGlen\411360-Mill_Point_Solar2\APRX\Mill_Point_94C_EX_15.aprx; Layout Name: MP_Fig15.5_Active_Ag_Within_Msg_11x17L



- ACTIVE AG FIELDS WITHIN MSG SOILS 1-4
- MINERAL SOIL GROUP 1
- MINERAL SOIL GROUP 2
- MINERAL SOIL GROUP 3
- MINERAL SOIL GROUP 4
- TOWN BOUNDARY
- VILLAGE BOUNDARY
- FACILITY COMPONENTS**
- ACCESS ROADS
- ARRAY PANELS
- SUBSTATION
- COLLECTION TRENCH
- HDD BORE PITS
- GRADING LIMITS
- INVERTERS
- LAYDOWN AREA
- POI SWITCHYARD
- POLES
- LIMITS OF DISTURBANCE
- FENCE LINE
- FACILITY SITE

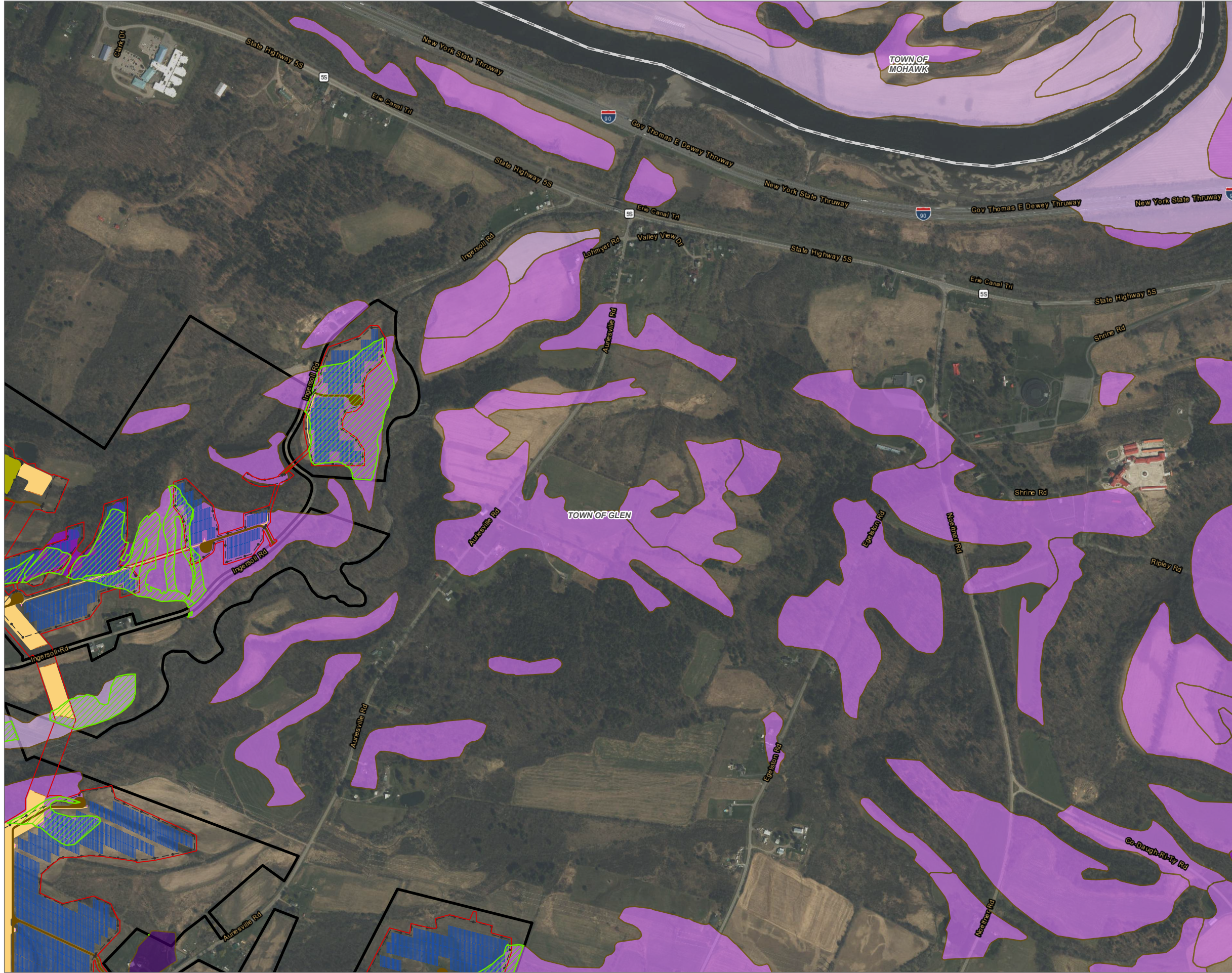
NOTES:
 1. THIS FIGURE IS DESIGNED TO BE VIEWED OR PRINTED IN COLOR AT 11X17.

BASE MAP: ESRI WORLD IMAGERY SERVICE (3/30/2022)
 DATA SOURCES: ESRI, USGS, NYS GIS, TRC.



| | | | |
|--|---------------------------|--|--------|
| PROJECT: | | CONNECTGLEN MONTGOMERY COUNTY LLC MILL POINT SOLAR I TOWN OF GLEN, MONTGOMERY COUNTY, NY | |
| TITLE: ACTIVE AGRICULTURAL LANDS WITHIN MSG 1-4 WITHIN THE FACILITY SITE | | | |
| DRAWN BY: | A. KAILAS | PROJ. NO.: | 411360 |
| CHECKED BY: | T. LATHAM | FIGURE 15-5 MAP 3 OF 7 | |
| APPROVED BY: | T. KONDAK | | |
| DATE: | JULY 2024 | | |
| | | 3 CORPORATE DRIVE SUITE 202 CLIFTON PARK, NY 12065 PHONE: 518.348.1190 | |
| FILE: | MILL_POINT_94C_EX_15.APRX | | |

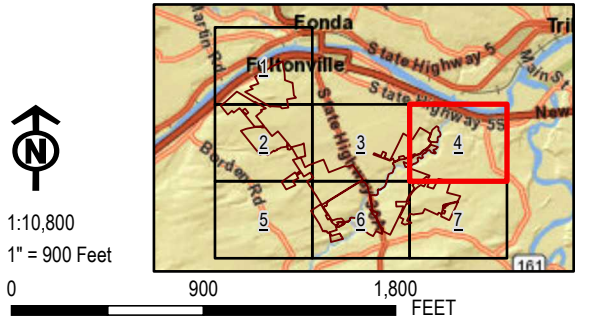
Coordinate System: NAD 1983 StatePlane New York East FIPS 3101 Feet; Map Rotation: 0
 - Saved By: AKAILAS on 7/26/2024, 08:38:24 AM; File Path: \\mnp\p\es\gis\arcgispro1\PROJECTS\ConnectGen\411360-Mill_Point_Solar2\APRX\Mill_Point_94C_EX_15.aprx; Layout Name: MP_Fig15-5_Active_Ag_Within_Msg_11x17L



- ACTIVE AG FIELDS WITHIN MSG SOILS 1-4
- MINERAL SOIL GROUP 1
- MINERAL SOIL GROUP 2
- MINERAL SOIL GROUP 3
- MINERAL SOIL GROUP 4
- TOWN BOUNDARY
- VILLAGE BOUNDARY
- FACILITY COMPONENTS**
- ACCESS ROADS
- ARRAY PANELS
- SUBSTATION
- COLLECTION TRENCH
- HDD BORE PITS
- GRADING LIMITS
- INVERTERS
- LAYDOWN AREA
- POI SWITCHYARD
- POLES
- LIMITS OF DISTURBANCE
- FENCE LINE
- FACILITY SITE

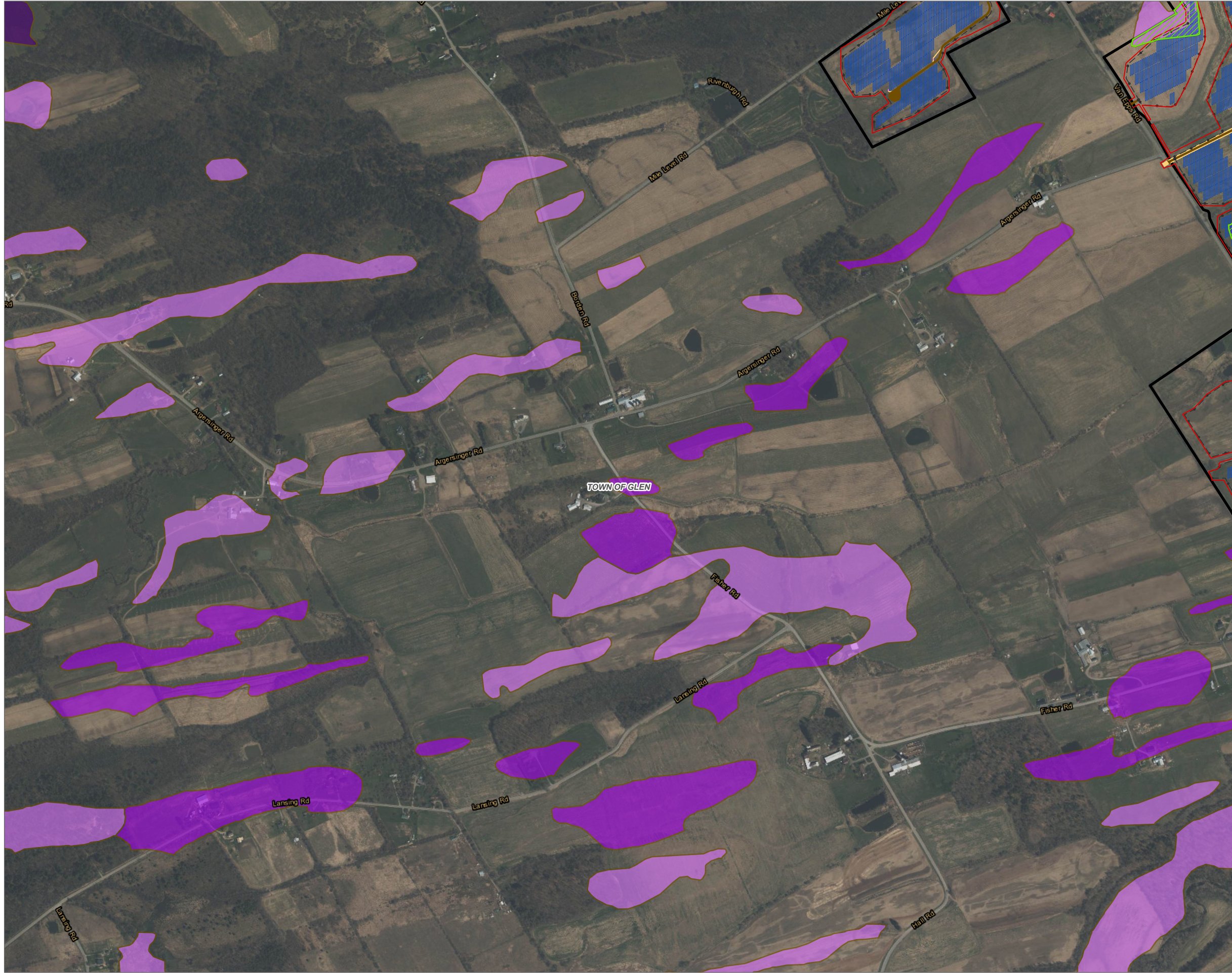
NOTES:
 1. THIS FIGURE IS DESIGNED TO BE VIEWED OR PRINTED IN COLOR AT 11X17.

BASE MAP: ESRI WORLD IMAGERY SERVICE (3/30/2022)
 DATA SOURCES: ESRI, USGS, NYS GIS, TRC.



| | | | |
|--|--------------------------|---|--------|
| PROJECT: | | CONNECTGEN MONTGOMERY COUNTY LLC MILL POINT SOLAR I TOWN OF GLEN, MONTGOMERY COUNTY, NY | |
| TITLE: ACTIVE AGRICULTURAL LANDS WITHIN MSG 1-4 WITHIN THE FACILITY SITE | | | |
| DRAWN BY: | A. KAILAS | PROJ. NO.: | 411360 |
| CHECKED BY: | T. LATHAM | FIGURE 15-5 MAP 4 OF 7 | |
| APPROVED BY: | T. KONDAK | | |
| DATE: | JULY 2024 | | |
| | | 3 CORPORATE DRIVE SUITE 202 CLIFTON PARK, NY 12065 PHONE: 518.348.1190 | |
| FILE: | MILL_POINT_94C_EX_15APRX | | |

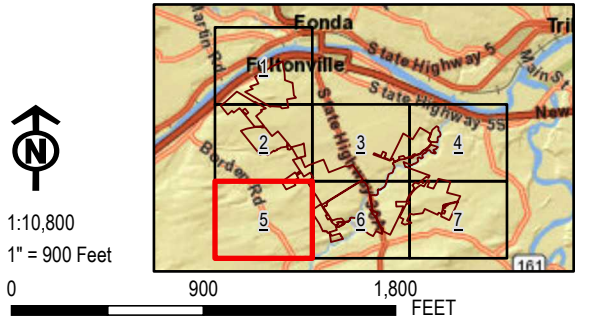
Coordinate System: NAD 1983 StatePlane New York East FIPS 3101 Feet; Map Rotation: 0
 - Saved By: AKAILAS on 7/26/2024, 08:38:24 AM; File Path: \\mnp01\gis\arcgispro1\PROJECTS\ConnectGen\411360-Mill_Point_Solar\2-APRX\Mill_Point_94C_EX_15.aprx; Layout Name: MP_Fig15.5_Active_Ag_Within_Msg_11x17L



- ACTIVE AG FIELDS WITHIN MSG SOILS 1-4
- MINERAL SOIL GROUP 1
- MINERAL SOIL GROUP 2
- MINERAL SOIL GROUP 3
- MINERAL SOIL GROUP 4
- TOWN BOUNDARY
- VILLAGE BOUNDARY
- FACILITY COMPONENTS**
- ACCESS ROADS
- ARRAY PANELS
- SUBSTATION
- COLLECTION TRENCH
- HDD BORE PITS
- GRADING LIMITS
- INVERTERS
- LAYDOWN AREA
- POI SWITCHYARD
- POLES
- LIMITS OF DISTURBANCE
- FENCE LINE
- FACILITY SITE

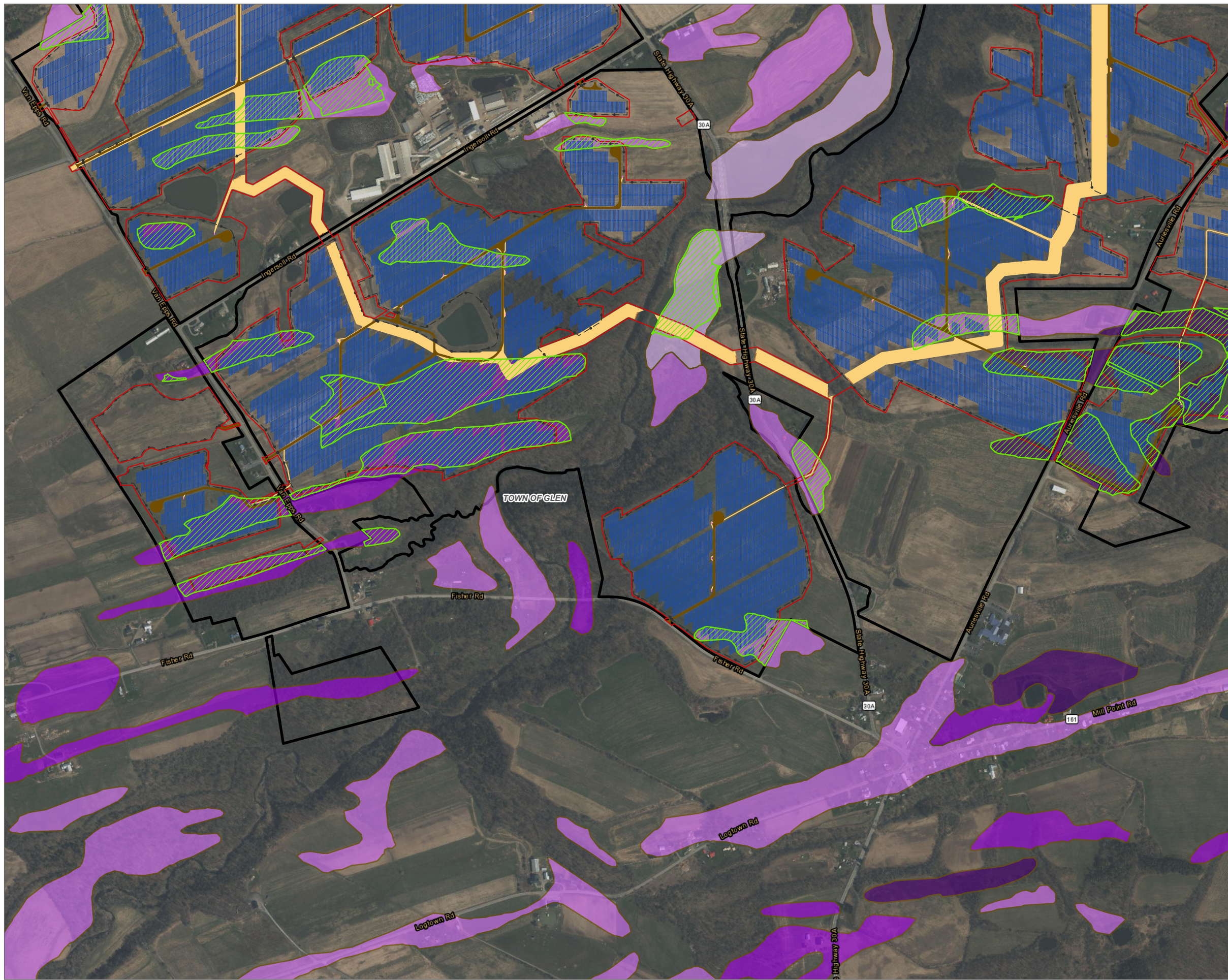
NOTES:
 1. THIS FIGURE IS DESIGNED TO BE VIEWED OR PRINTED IN COLOR AT 11X17.

BASE MAP: ESRI WORLD IMAGERY SERVICE (3/30/2022)
 DATA SOURCES: ESRI, USGS, NYS GIS, TRC.



| | |
|--|----------------------------------|
| PROJECT: CONNECTGEN MONTGOMERY COUNTY LLC MILL POINT SOLAR I TOWN OF GLEN, MONTGOMERY COUNTY, NY | |
| TITLE: ACTIVE AGRICULTURAL LANDS WITHIN MSG 1-4 WITHIN THE FACILITY SITE | |
| DRAWN BY: A. KAILAS | PROJ. NO.: 411360 |
| CHECKED BY: T. LATHAM | FIGURE 15-5 MAP 5 OF 7 |
| APPROVED BY: T. KONDAK | |
| DATE: JULY 2024 | |
| | |
| 3 CORPORATE DRIVE SUITE 202 CLIFTON PARK, NY 12065 PHONE: 518.348.1190 | |
| FILE: | MILL_POINT_94C_EX_15APRX |

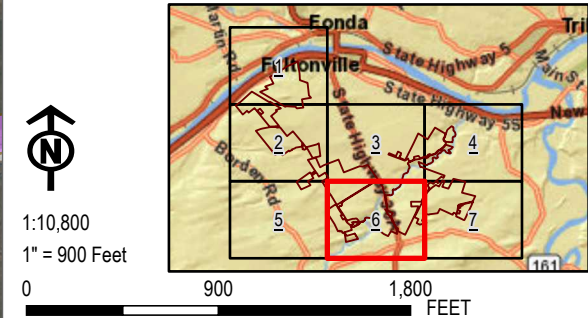
Coordinate System: NAD 1983 StatePlane New York East FIPS 3101 Feet; Map Rotation: 0
 - Saved By: AKAILAS on 7/26/2024, 08:38:24 AM; File Path: \\mpleyos\gis\arcgispro1\PROJECTS\ConnectGen\Mill Point_Solar\2-APRX\Mill_Point_94C_Ex_15.aprx; Layout Name: MP_Fig15-5_Active_Ag_Within_Msg_11x17L



- ACTIVE AG FIELDS WITHIN MSG SOILS 1-4
- MINERAL SOIL GROUP 1
- MINERAL SOIL GROUP 2
- MINERAL SOIL GROUP 3
- MINERAL SOIL GROUP 4
- TOWN BOUNDARY
- VILLAGE BOUNDARY
- FACILITY COMPONENTS**
- ACCESS ROADS
- ARRAY PANELS
- SUBSTATION
- COLLECTION TRENCH
- HDD BORE PITS
- GRADING LIMITS
- INVERTERS
- LAYDOWN AREA
- POI SWITCHYARD
- POLES
- LIMITS OF DISTURBANCE
- FENCE LINE
- FACILITY SITE

NOTES:
 1. THIS FIGURE IS DESIGNED TO BE VIEWED OR PRINTED IN COLOR AT 11X17.

BASE MAP: ESRI WORLD IMAGERY SERVICE (3/30/2022)
 DATA SOURCES: ESRI, USGS, NYS GIS, TRC.



| | |
|--|---|
| PROJECT: CONNECTGEN MONTGOMERY COUNTY LLC MILL POINT SOLAR I TOWN OF GLEN, MONTGOMERY COUNTY, NY | |
| TITLE: ACTIVE AGRICULTURAL LANDS WITHIN MSG 1-4 WITHIN THE FACILITY SITE | |
| DRAWN BY: A. KAILAS | PROJ. NO.: 411360 |
| CHECKED BY: T. LATHAM | FIGURE 15-5 MAP 6 OF 7 |
| APPROVED BY: T. KONDAK | |
| DATE: JULY 2024 | |
| | |
| 3 CORPORATE DRIVE SUITE 202 CLIFTON PARK, NY 12065 PHONE: 518.348.1190 | |
| FILE: | MILL_POINT_94C_EX_15.APRX |

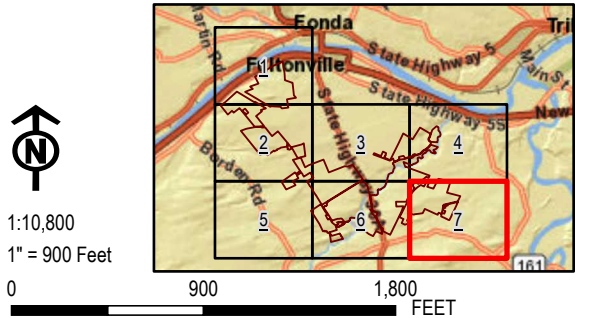
Coordinate System: NAD 1983 StatePlane New York East FIPS 3101 Feet; Map Rotation: 0
 - Saved By: AKAILAS on 7/26/2024, 08:38:24 AM; File Path: \\maplovesgis\isarc\proj1-PROJECTS\ConnectGen\411360-Mill_Point_Solar2\APRX\Mill_Point_94C_EX_15.aprx; Layout Name: MP_Fig15-5_Active_Ag_Within_Msg_11x17L



- ACTIVE AG FIELDS WITHIN MSG SOILS 1-4
- MINERAL SOIL GROUP 1
- MINERAL SOIL GROUP 2
- MINERAL SOIL GROUP 3
- MINERAL SOIL GROUP 4
- TOWN BOUNDARY
- VILLAGE BOUNDARY
- FACILITY COMPONENTS**
- ACCESS ROADS
- ARRAY PANELS
- SUBSTATION
- COLLECTION TRENCH
- HDD BORE PITS
- GRADING LIMITS
- INVERTERS
- LAYDOWN AREA
- POI SWITCHYARD
- POLES
- LIMITS OF DISTURBANCE
- FENCE LINE
- FACILITY SITE

NOTES:
 1. THIS FIGURE IS DESIGNED TO BE VIEWED OR PRINTED IN COLOR AT 11X17.

BASE MAP: ESRI WORLD IMAGERY SERVICE (3/30/2022)
 DATA SOURCES: ESRI, USGS, NYS GIS, TRC.



| | | | |
|--|-----------|---|--------|
| PROJECT: | | CONNECTGEN MONTGOMERY COUNTY LLC MILL POINT SOLAR I TOWN OF GLEN, MONTGOMERY COUNTY, NY | |
| TITLE: ACTIVE AGRICULTURAL LANDS WITHIN MSG 1-4 WITHIN THE FACILITY SITE | | | |
| DRAWN BY: | A. KAILAS | PROJ. NO.: | 411360 |
| CHECKED BY: | T. LATHAM | FIGURE 15-5 MAP 7 OF 7 | |
| APPROVED BY: | T. KONDAK | | |
| DATE: | JULY 2024 | | |
| | | 3 CORPORATE DRIVE SUITE 202 CLIFTON PARK, NY 12065 PHONE: 518.348.1190 | |
| FILE: | | MILL_POINT_94C_EX_15.APRX | |