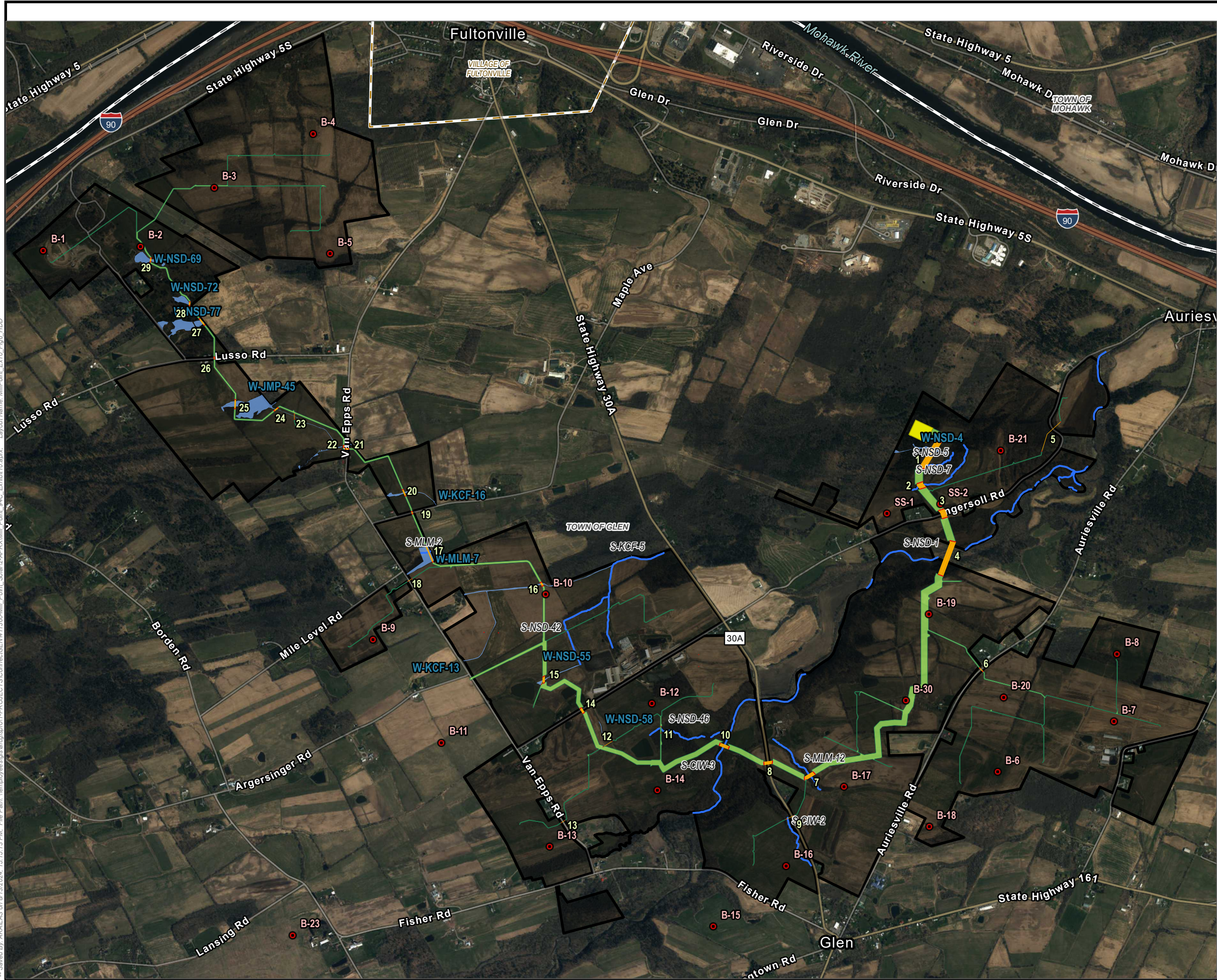
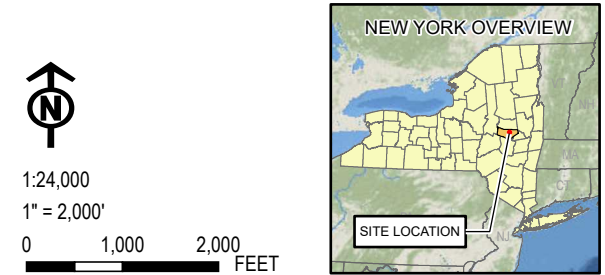


Coordinate System: NAD 1983 StatePlane New York East FIPS 3101 Feet, Map Rotation: 0  
 - Saved By: AKAILAS on 8/13/2024, 15:15:13 PM, File Path: \\emplyeeesg1regisr01\PROJECTS\ConnectGen\119804\Mill\_Point\_Solar1\APR\Mill\_Point\_94C\_Exhibit10.aprx, Layout Name: MillPoint\_Ex10\_Fig6\_HDD



- GEOTECHNICAL BORING LOCATIONS
- HDD PIT
- COLLECTION LINE TRENCH
- COLLECTION STATION
- DELINEATED WETLAND
- DELINEATED STREAM
- FACILITY SITE
- COUNTY BOUNDARY
- TOWN BOUNDARY
- VILLAGE BOUNDARY

BASE MAP: ESRI WORLD IMAGERY BASEMAP - MARCH 2022  
 DATA SOURCES: TRC, PROJECT AREA, 2024.  
 NYGIS, ESRI, USGS.



PROJECT: <b>CONNECTGEN MONTGOMERY COUNTY LLC</b>	
MILL POINT SOLAR I	
TOWN OF GLEN, MONTGOMERY COUNTY, NY	
TITLE: <b>HDD &amp; BORING LOCATIONS</b>	
DRAWN BY: A. KAILAS	PROJ. NO.: 411360.1000.0000
CHECKED BY: L. HOOKS	<b>FIGURE 10-6</b>
APPROVED BY: T. KONDAK	
DATE: AUGUST 2024	
3 CORPORATE DRIVE SUITE 202 CLIFTON PARK, NY 12065 PHONE: 518.348.1190	
FILE:	Mill_Point_94C_Exhibit10.aprx