









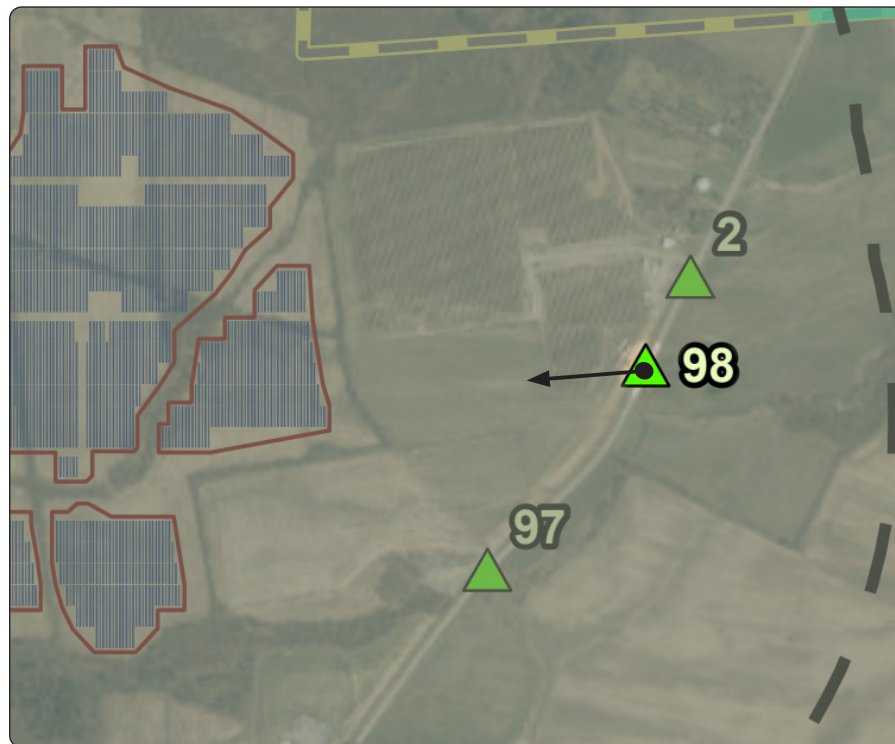


Existing Conditions

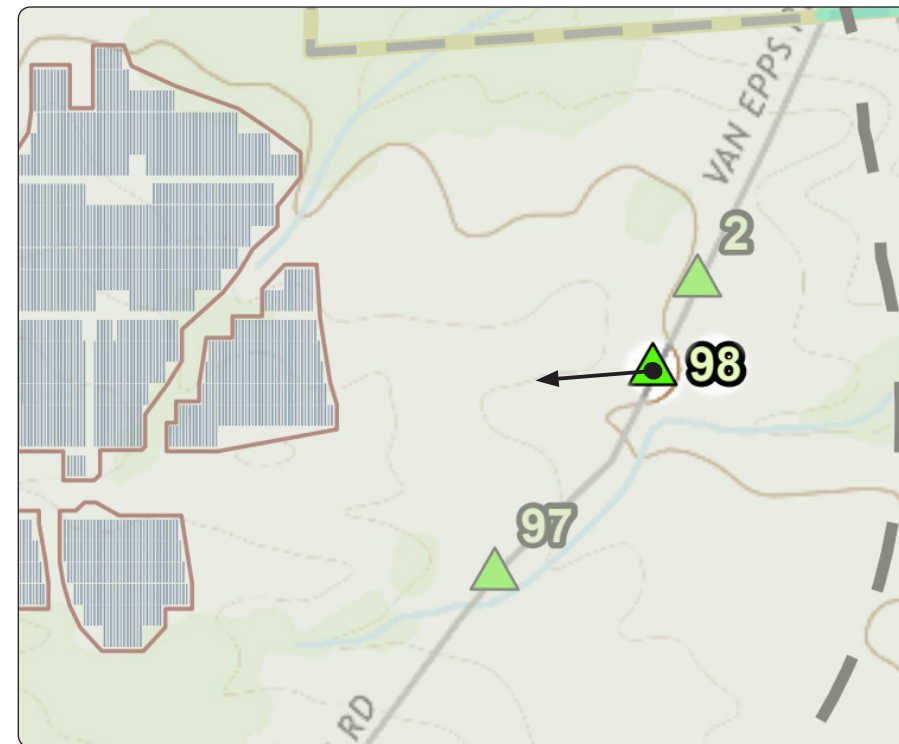


W

Viewpoint Location Aerial Map



Viewpoint Location Topographic Map



Viewpoint Coordinates	42.93667 -74.37510
Town	Glen
Viewpoint Elevation (MSL)	504
Distance to Fence Line	1,492 feet
Direction of View	West
Lens Focal Length	31mm (50mm Equivalent)
Date/Time of Photograph	4/11/2023, 12:32 PM









