

### VIEWPOINT 79



E

Location:	Municipality:	LSZ:	Photo Date:	Lat/Long	County:
State Highway 30A	Town of Glen	1,3	4/15/2022	42.90209 -74.34832	Montgomery

### VIEWPOINT 80



N

Location:	Municipality:	LSZ:	Photo Date:	Lat/Long	County:
Glen Reformed Church, Glen Historic District	Hamlet of Glen, Town of Glen	3,4	4/15/2022	42.89508 -74.34156	Montgomery

### VIEWPOINT 81



WNW

Location:	Municipality:	LSZ:	Photo Date:	Lat/Long	County:
Reynolds Road	Town of Glen	1	4/15/2022	42.87505 -74.33025	Montgomery

**VIEWPOINT 82**



**WNW**

<b>Location:</b>	<b>Municipality:</b>	<b>LSZ:</b>	<b>Photo Date:</b>	<b>Lat/Long</b>	<b>County:</b>
Mcduffee Road	Town of Glen	1,3	4/15/2022	42.87630 -74.33391	Montgomery

**VIEWPOINT 83**



**NE**

<b>Location:</b>	<b>Municipality:</b>	<b>LSZ:</b>	<b>Photo Date:</b>	<b>Lat/Long</b>	<b>County:</b>
Logtown Road	Town of Glen	1	4/15/2022	42.88393 -74.37396	Montgomery

**VIEWPOINT 84**



**N**

<b>Location:</b>	<b>Municipality:</b>	<b>LSZ:</b>	<b>Photo Date:</b>	<b>Lat/Long</b>	<b>County:</b>
Logtown Road, (S72) Snowmobile Trail	Town of Glen	1	4/15/2022	42.87818 -74.38546	Montgomery

### VIEWPOINT 85



### ENE

<b>Location:</b>	<b>Municipality:</b>	<b>LSZ:</b>	<b>Photo Date:</b>	<b>Lat/Long</b>	<b>County:</b>
Brumley Road	Town of Root	1	4/15/2022	42.88791 -74.42901	Montgomery

### VIEWPOINT 86



### SW

<b>Location:</b>	<b>Municipality:</b>	<b>LSZ:</b>	<b>Photo Date:</b>	<b>Lat/Long</b>	<b>County:</b>
Erie Canalway Trail, State Recreational Area, (C7P) Snowmobile Trail,	Town of Glen	3,4	4/15/2022	42.94771 -74.38107	Montgomery

### VIEWPOINT 87



### SSW

<b>Location:</b>	<b>Municipality:</b>	<b>LSZ:</b>	<b>Photo Date:</b>	<b>Lat/Long</b>	<b>County:</b>
Village of Fonda Recreational Park & Memorial	Village of Fonda, Town of Mohawk	3,4	4/15/2022	42.95300 -74.37152	Montgomery

### VIEWPOINT 88



SW

Location:	Municipality:	LSZ:	Photo Date:	Lat/Long	County:
Mohawk Drive, (C7B) Snowmobile Trail	Hamlet of Tribes Hill, Town of Mohawk	1,3	4/15/2022	42.94178 -74.30423	Montgomery

### VIEWPOINT 89



SW

Location:	Municipality:	LSZ:	Photo Date:	Lat/Long	County:
Mohawk Drive	Hamlet of Tribes Hill, Town of Mohawk	3	4/15/2022	42.94494 -74.29993	Montgomery

### VIEWPOINT 90



E

Location:	Municipality:	LSZ:	Photo Date:	Lat/Long	County:
W Main Street, Revolutionary Trail Scenic Byway	Village of Fonda, Town of Mohawk	3	4/15/2022	42.95453 -74.37503	Montgomery

**VIEWPOINT 91**



**NE**

Location:	Municipality:	LSZ:	Photo Date:	Lat/Long	County:
Fonda Little League Park	Village of Fonda, Town of Mohawk	2,3,4	4/15/2022	42.96148 -74.39621	Montgomery

**VIEWPOINT 92**



**SE**

Location:	Municipality:	LSZ:	Photo Date:	Lat/Long	County:
Pavlus Lane	Town of Mohawk	3,4	4/15/2022	42.94756 -74.42259	Montgomery

**VIEWPOINT 93**



**S**

Location:	Municipality:	LSZ:	Photo Date:	Lat/Long	County:
State Highway 5, Revolutionary Trail Scenic Byway	Town of Mohawk	3,4	4/15/2022	42.94313 -74.40655	Montgomery

### VIEWPOINT 94



S

Location:	Municipality:	LSZ:	Photo Date:	Lat/Long	County:
Saint Kateri National Shrine and Historic Site, Tekakwitha Friary	Town of Mohawk	2,3,4	4/15/2022	42.95134 -74.39235	Montgomery

### VIEWPOINT 95



S

Location:	Municipality:	LSZ:	Photo Date:	Lat/Long	County:
Fonda (Caughnawga) Cemetery	Village of Fonda, Town of Mohawk	2,3,4	4/15/2022	42.95755 -74.36878	Montgomery

### VIEWPOINT 96



S

Location:	Municipality:	LSZ:	Photo Date:	Lat/Long	County:
Brave Ridge Drive	Town of Mohawk	3,4	4/15/2022	42.97227 -74.36956	Montgomery

### VIEWPOINT 97



### WNW

Location:	Municipality:	LSZ:	Photo Date:	Lat/Long	County:
Van Epps Road, Existing Van Epps & Mohawk View Solar Farm	Town of Glen	1,3,4	4/14/2023	42.93711 -74.37485	Montgomery

### VIEWPOINT 98



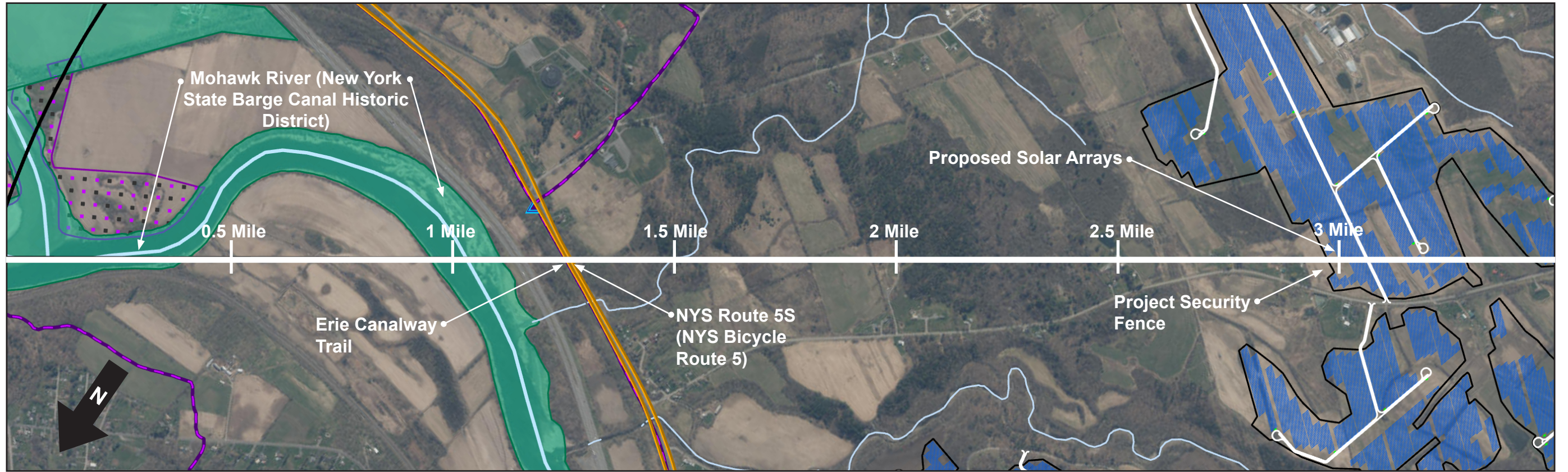
### WSW

Location:	Municipality:	LSZ:	Photo Date:	Lat/Long	County:
Van Epps Road, Existing Van Epps & Mohawk View Solar Farm	Town of Glen	1,3,4	4/14/2023	42.93450 -74.37762	Montgomery

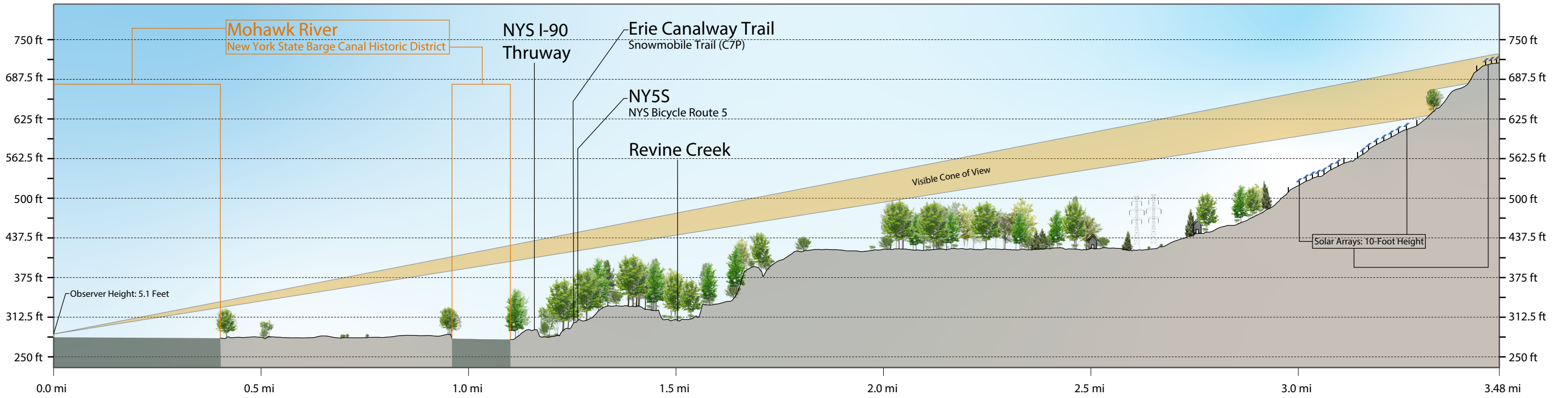
Mill Point Solar I Project  
Visual Impact Assessment

**Revised Attachment 3**  
**Photo-Simulations and Line of Sight Profiles**



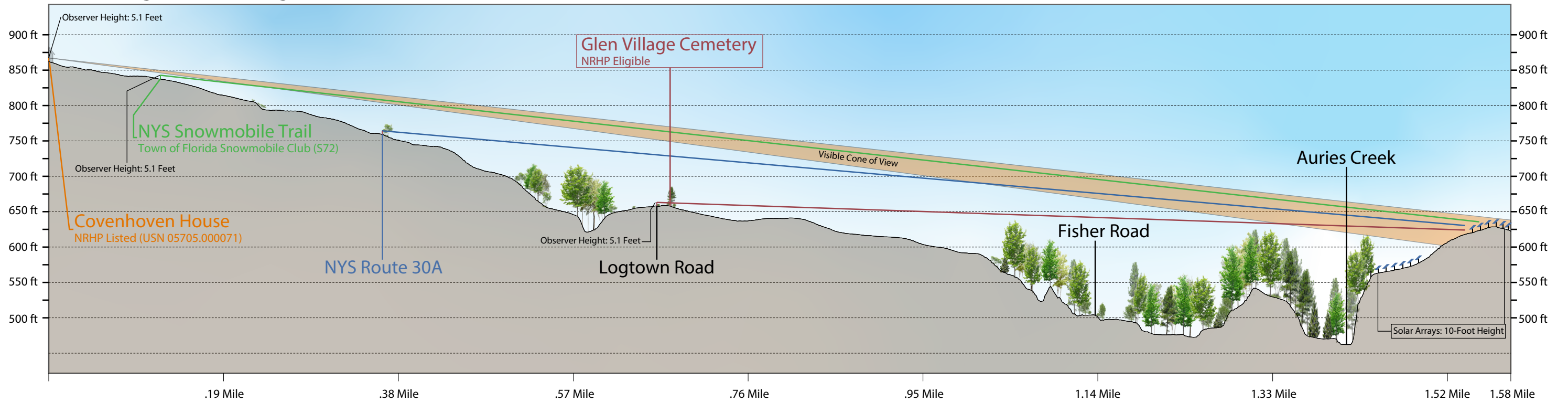


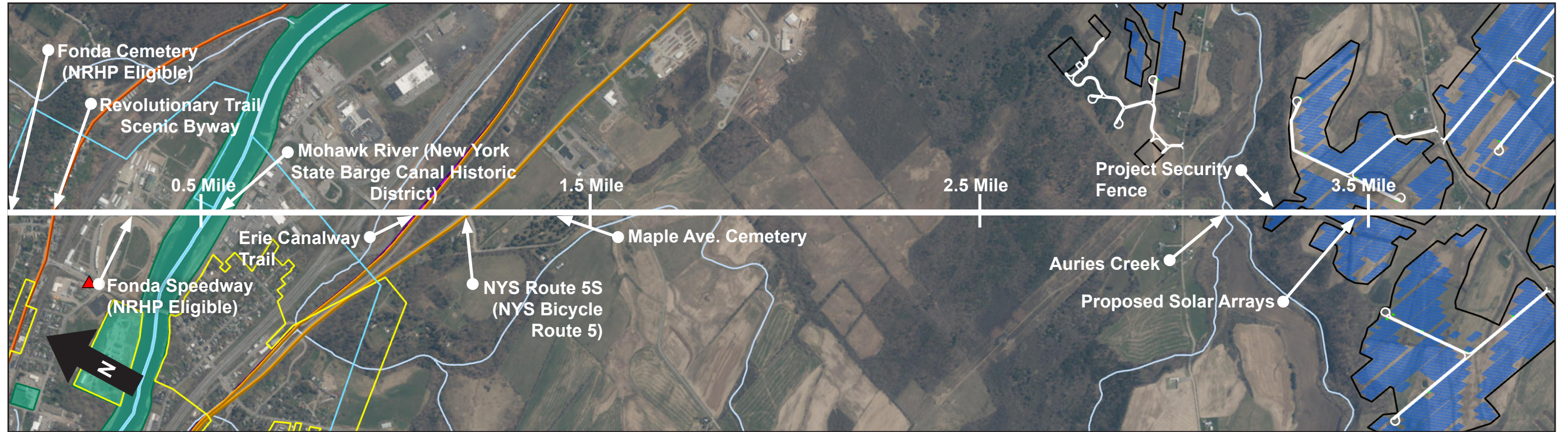
Line of Sight L1 - Facing Southwest



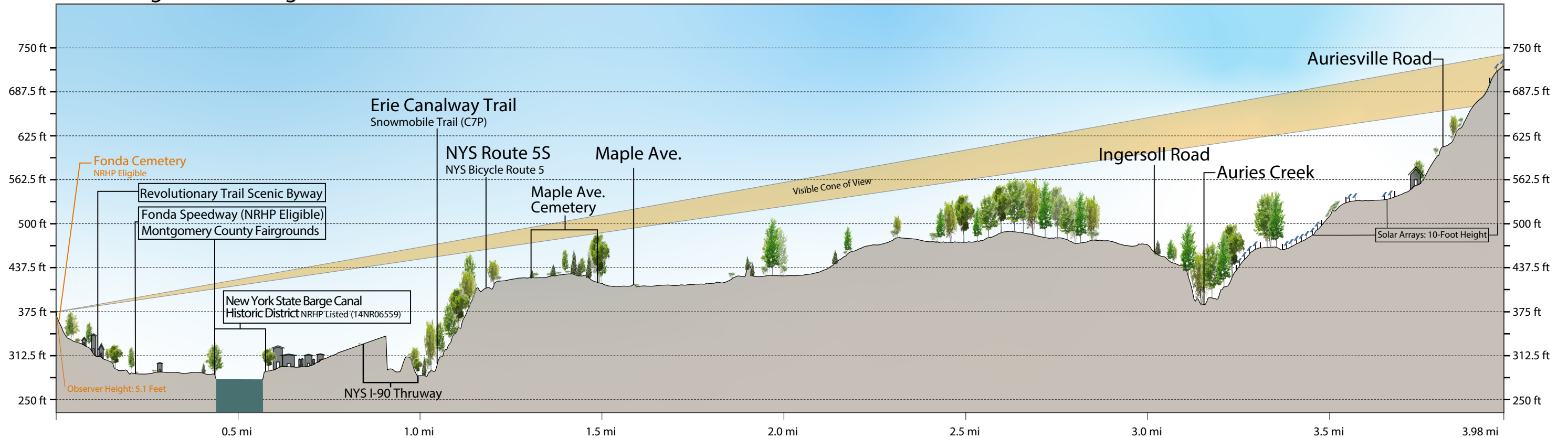


Line of Sight L2 - Facing Northwest





Line of Sight L3 - Facing Southeast



**Existing Conditions**

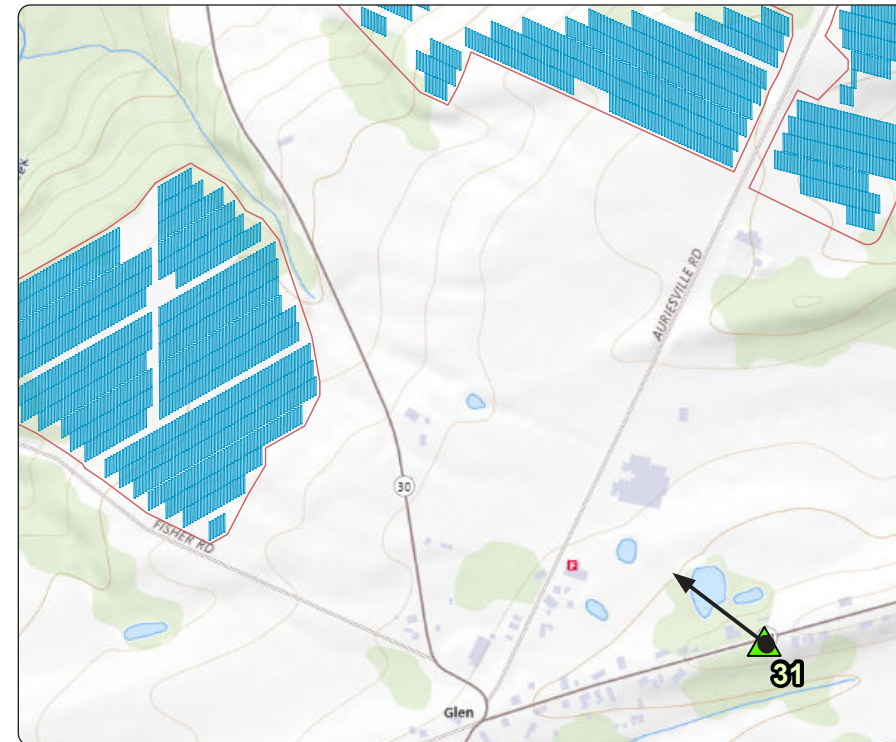


NW

**Viewpoint Location Aerial Map**



**Viewpoint Location Topographic Map**



Viewpoint Coordinates	42.89554 -74.33883
Town	Glen
Viewpoint Elevation (MSL)	742
Distance to Fence Line	0.51 miles
Direction of View	Northwest
Lens Focal Length	31mm (50mm Equivalent)
Date/Time of Photograph	4/8/2021, 12:48 PM